



Healey Street, NW1

£2,400,000

This beautiful mid-terrace Victorian house has four floors with five double bedrooms, three bathrooms and a west facing garden. The house has been completely renovated throughout and extended.

Healey Street is within easy reach of the new French Lycee school in Holmes Road, the excellent transport links to Kentish Town and the eclectic mix of shops, bars and restaurants of Camden Town.

Features

- Five Double Bedrooms
- Renovated & Extended
- West Facing Garden
- Chain Free
- Freehold
- Excellent Location



Healey Street, NW1

As you enter the house on the ground floor you will notice the fantastic ceiling height, a large reception rooms and a kitchen / dining room that leads out onto a west facing garden.

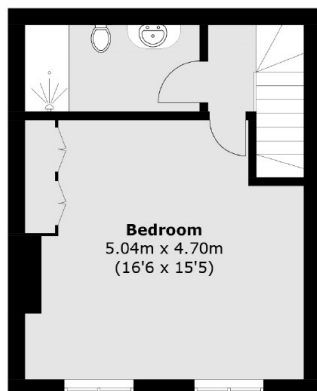
On the first floor you have two double bedrooms with a family bathroom.

On the second floor there are two double bedrooms with a family bathroom.

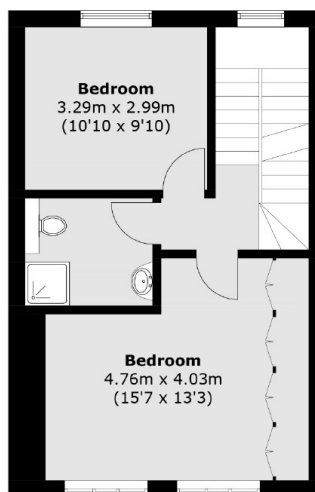
On the top floor you have a fantastic principle bedroom with a bathroom and great views.



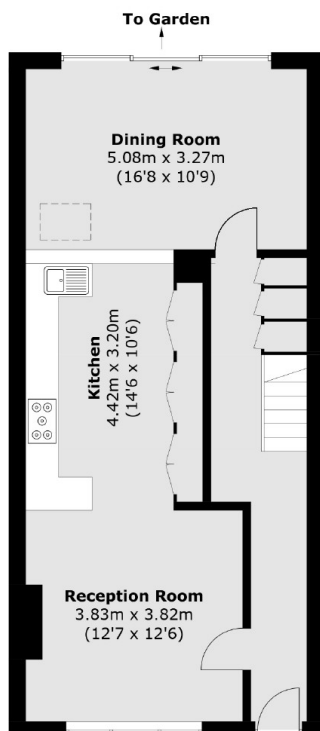
Healey Street, London, NW1



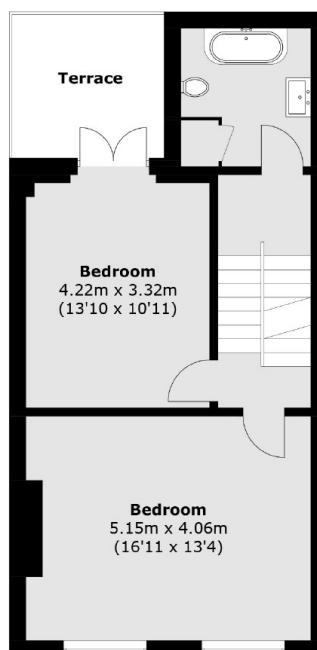
Third Floor



Second Floor



Ground Floor



First Floor

Total area (approx.): 184.9 sq. m (1,990.3 sq. ft)