



Delancey Street, NW1

£525,000

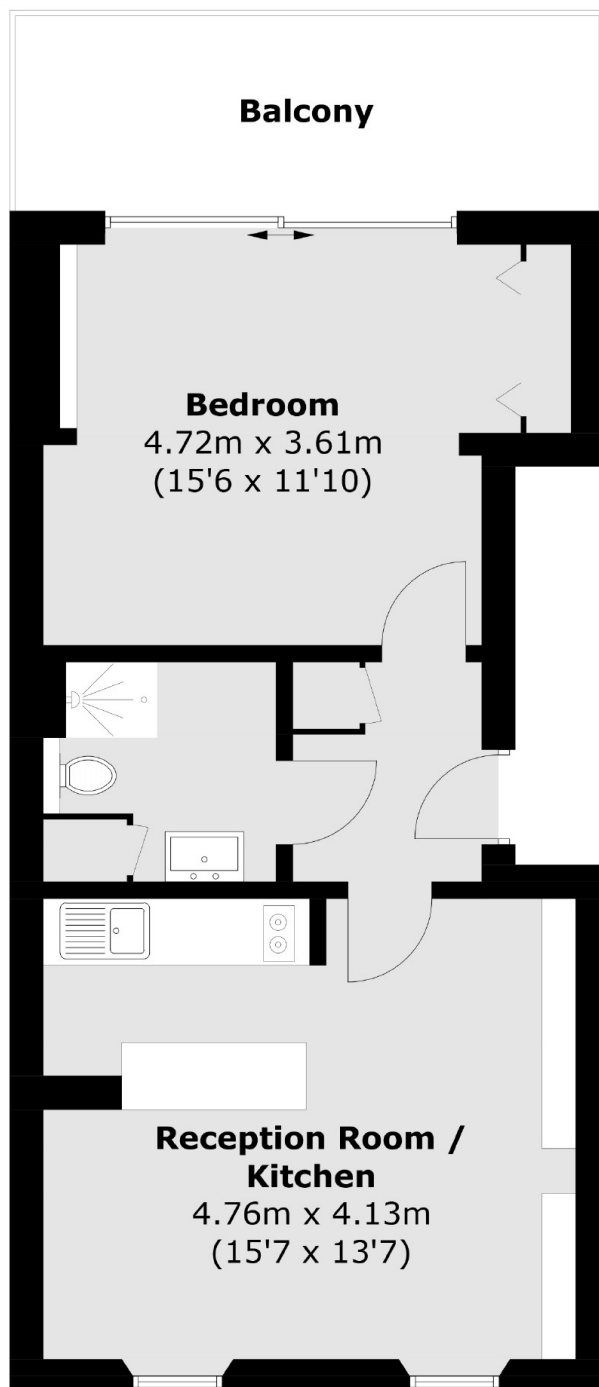
This first floor one double bedroom apartment in a Georgian building has an open plan living room with high ceilings and sash windows. There are patio doors that lead out from the bedroom to a south-west facing balcony.

The apartment is two hundred yards from Camden High Street and 0.3 miles from Camden Town tube station (Northern line). Regents Park is a short stroll away in the other direction.

Features

- One Double Bedroom
- Share of Freehold
- High Ceilings
- Large Windows
- Chain Free
- South-West Facing Balcony

Delancey Street,
London, NW1



Total area (approx.): 44.8 sq. m (482.2 sq. ft)
Balcony: 9.1 sq. m (98.0 sq. ft)

Dexters

Kentish Town & Camden
274 Kentish Town Road
London
NW5 2AA
Sales
020 7483 6390

Energy Rating: . We aim to make our particulars both accurate and reliable. However they are not guaranteed; nor do they form part of an offer or contract. If you require clarification on any points then please contact us, especially if you're traveling some distance to view. Please note that appliances and heating systems have not been tested and therefore no warranties can be given as to their good working order.

 **RICS** | Regulated
Estate Agent
and Letting Agent

dexters.co.uk