

Lady Margaret Road, NW5 £1,100,000

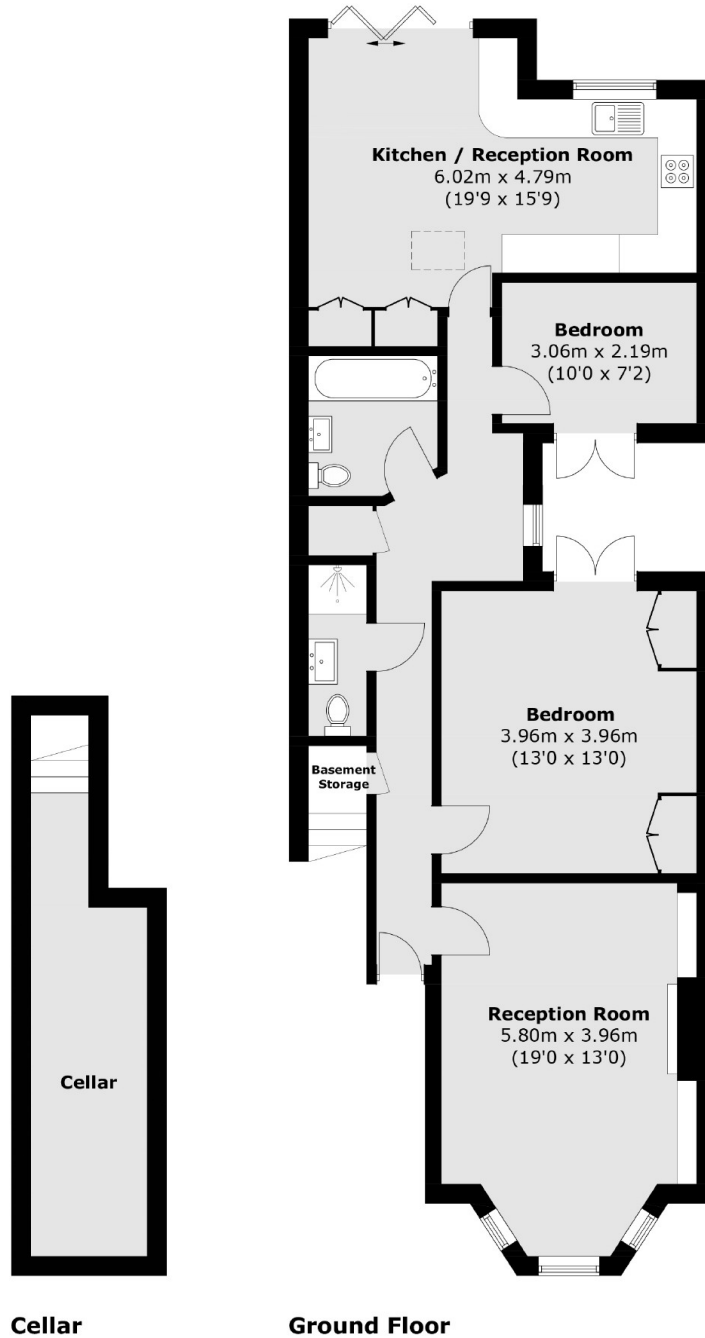
A beautiful two bedroom garden apartment on one of Kentish Town's most sought after roads. With high ceilings throughout and lots of natural light, the property has a spacious reception room and fully fitted kitchen/ diner with direct access on to a private East facing garden.

Located close to the busy shopping hub of Kentish Town High St as well as the green open spaces of Hampstead Heath and Parliament Hill. Nearby transport links include both Kentish Town (Northern line & Thameslink) and Tufnell Park (Northern line) stations.

Features

- Private Garden
- Two Bedrooms
- Two Bathrooms
- High Ceilings
- Fantastic Condition
- Chain Free

Lady Margaret Road,
London, NW5



Total area (approx.): 104.3 sq. m (1,122.6 sq. ft) (Including Cellar)