



## Chalk Farm Road, NW1

### £680,000

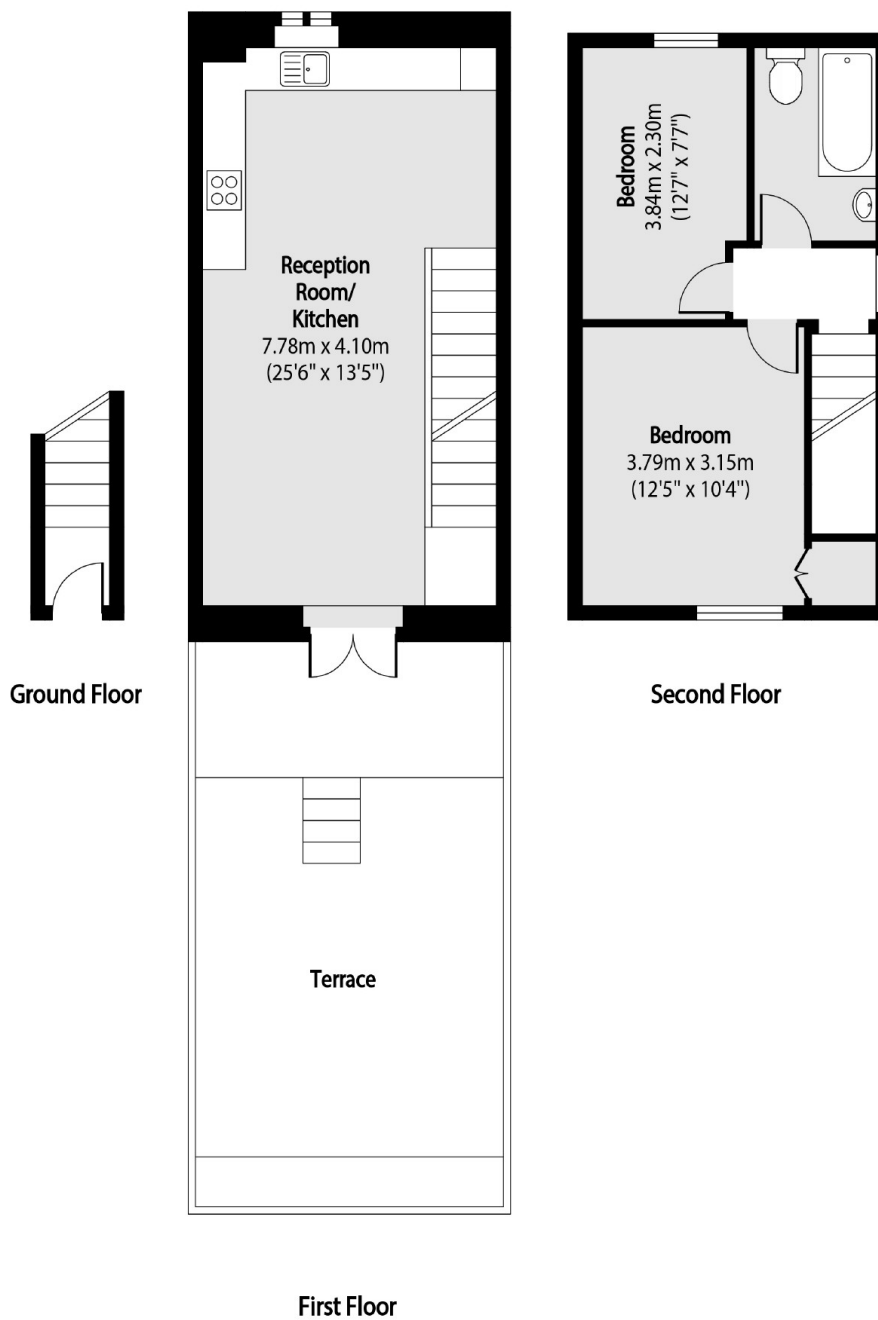
This two double bedroom apartment set in the heart of Chalk Farm. The property has an open plan kitchen/reception room, one bathroom and a large private terrace. The apartment has been recently refurbished throughout to a very high standard.

Within easy reach are an abundance of shops, bars, cafés and entertainment venues including the world famous Roundhouse. Primrose Hill, Regents Park and Hampstead Heath are all within very close proximity. Closest station's are Chalk Farm Station (Northern Line) with Kentish Town West (Overground).

### Features

- Two Double Bedrooms
- One Bathroom
- Recently Refurbished
- Large Private Terrace
- Chain Free
- Freehold

# Chalk Farm Road, London, NW1



Total area (approx): 66.60 sq m (717 sq. ft)

Terrace total area (approx): 33.97 sq m (366 sq. ft)

## Dexters

Kentish Town & Camden  
274 Kentish Town Road  
London  
NW5 2AA  
Sales  
020 7483 6390

Energy Rating: - We aim to make our particulars both accurate and reliable. However they are not guaranteed; nor do they form part of an offer or contract. If you require clarification on any points then please contact us, especially if you're traveling some distance to view. Please note that appliances and heating systems have not been tested and therefore no warranties can be given as to their good working order.

 **RICS** | Regulated  
Estate Agent  
and Letting Agent

dexters.co.uk