



## Kiln Place, NW5

£923 Per week

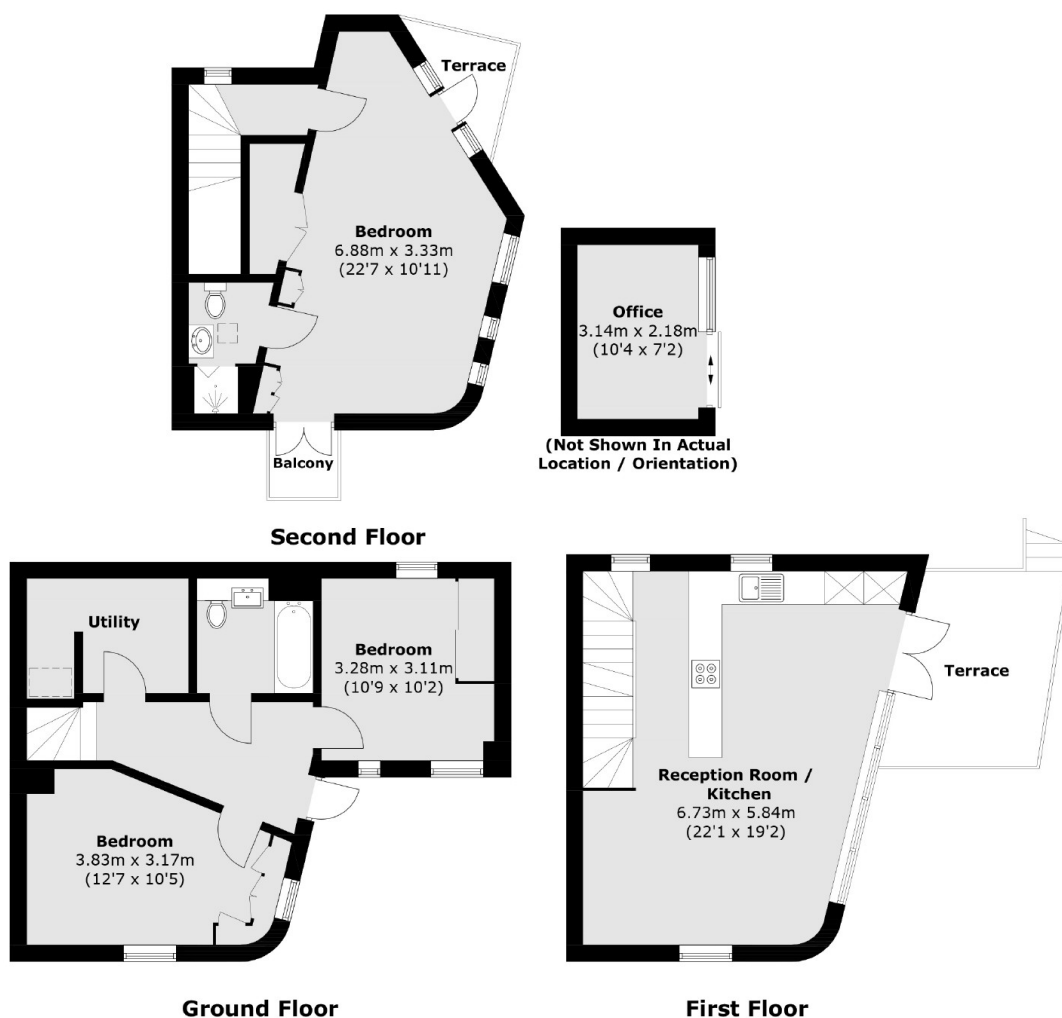
A stylish three bedroom modern townhouse flooded with natural light and benefiting from ample storage space. The property has an open plan, fully fitted kitchen, a private garden and a separate office space, as well as two additional terraces and a balcony.

Kiln Place is just moments away from Hampstead Heath and within easy reach of the London Overground and the Northern Line. The popular shops, pubs and restaurants of lower Hampstead are also close by.

### Features

- Three Bedroom
- Two Bathroom
- Private Garden
- Two Terraces
- Open Plan Kitchen
- Office Space

# Kiln Place, London, NW5



Total area (approx.): 109.4 sq. m (1,177.5 sq. ft)  
Outbuilding (approx.): 7.0 sq. m (75.3 sq. ft)  
Terrace & Balcony area (approx.): 13.3 sq. m (143.2 sq. ft)