



## St. Leonards Square, NW5

£1,038 Per week

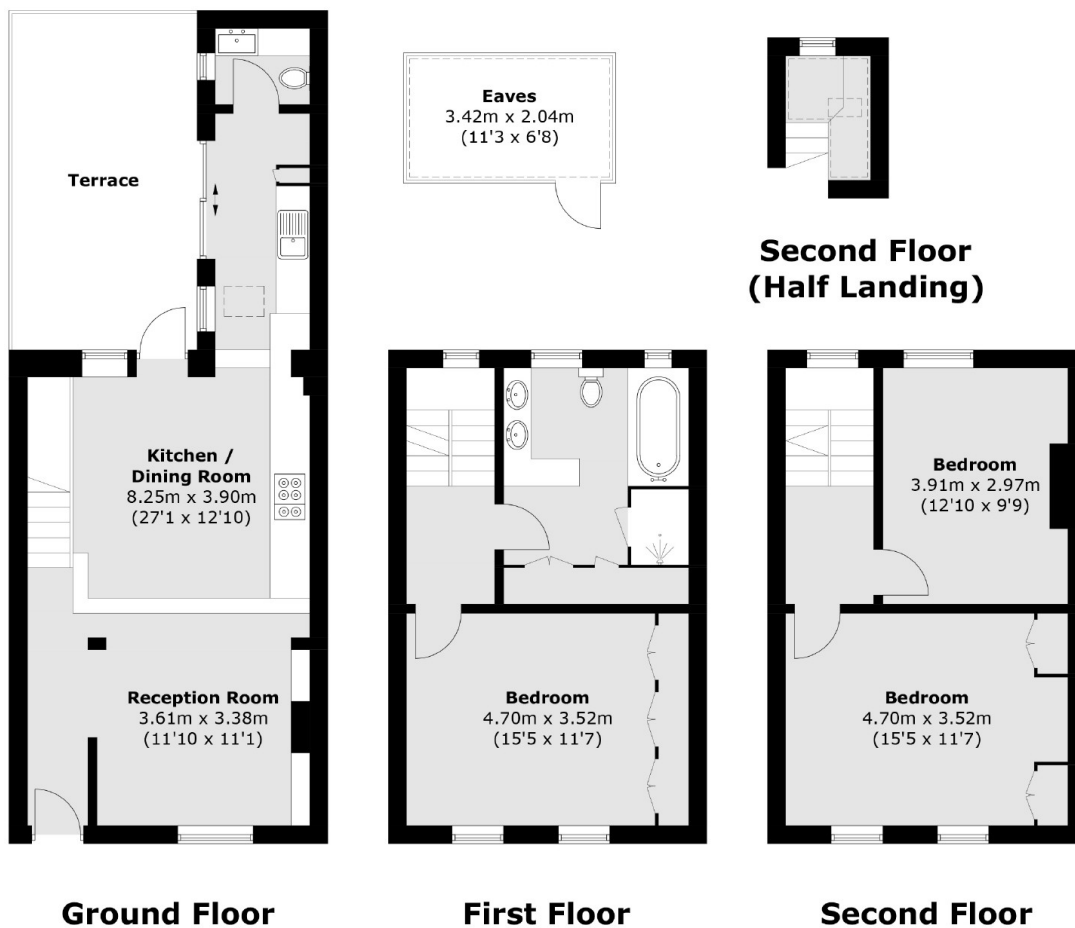
An attractive family home spread over three floors close to the Northern Line and Primrose Hill.

St. Leonards Square is a charming residential close just moments from the Northern Line, Overground and popular highstreets of Primrose Hill, Camden and Kentish Town.

### Features

- Three Bedroom House
- Secluded Patio Garden
- Modern Kitchen
- Double Bedrooms
- Great Location

# St. Leonards Square, London, NW5



Total area (approx.): 114.2 sq. m (1,229.2 sq. ft)  
Terrace: 16.9 sq. m (181.9 sq. ft)