



Rochester Place, NW1

£765,000

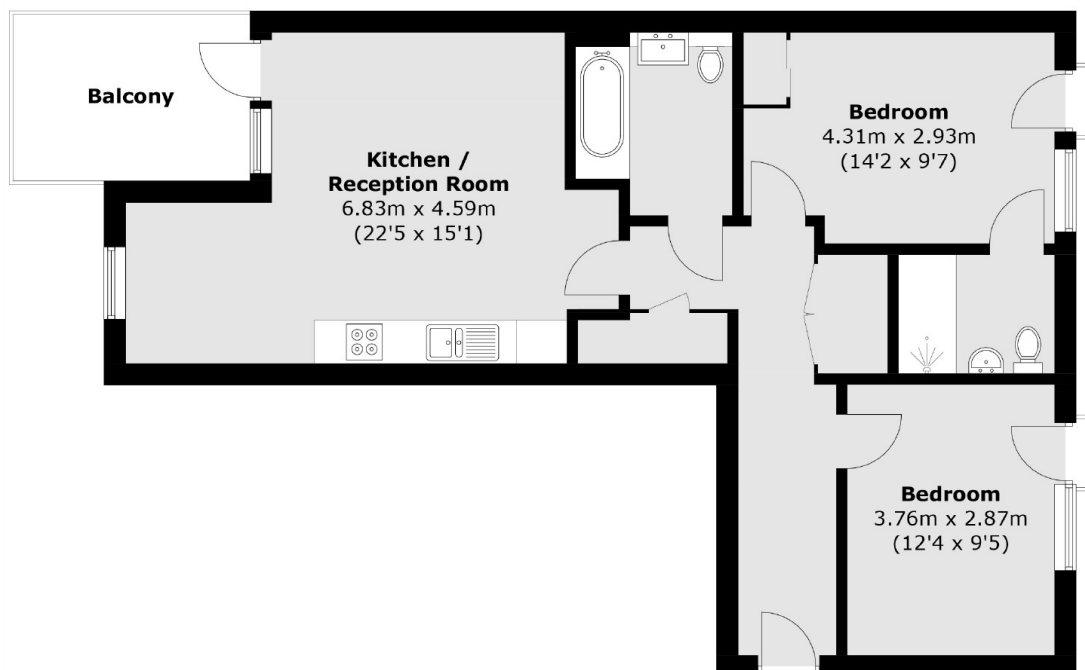
This stunning two double bedroom, two bathroom apartment boasts a modern kitchen, a private balcony, and a communal roof terrace. The property is situated in an award-winning development, built by Barratt London, in the heart of Camden.

Rochester Place offers easy access to fantastic transport links in Kings Cross, Camden and Euston. Camden Town, Regents Park and Primrose Hill are all within easy reach offering an amazing choice of popular restaurants, bars and green open spaces.

Features

- Two Double Bedrooms
- Two Bathrooms
- Private Balcony
- Communal Roof Terrace
- Concierge Service
- Long Lease

Rochester Place, London, NW1



Total area (approx.): 72.4 sq. m (779.3 sq. ft)
Balcony area (approx.): 7.6 sq. m (81.8 sq. ft)