



Weedington Road, NW5

£550,000

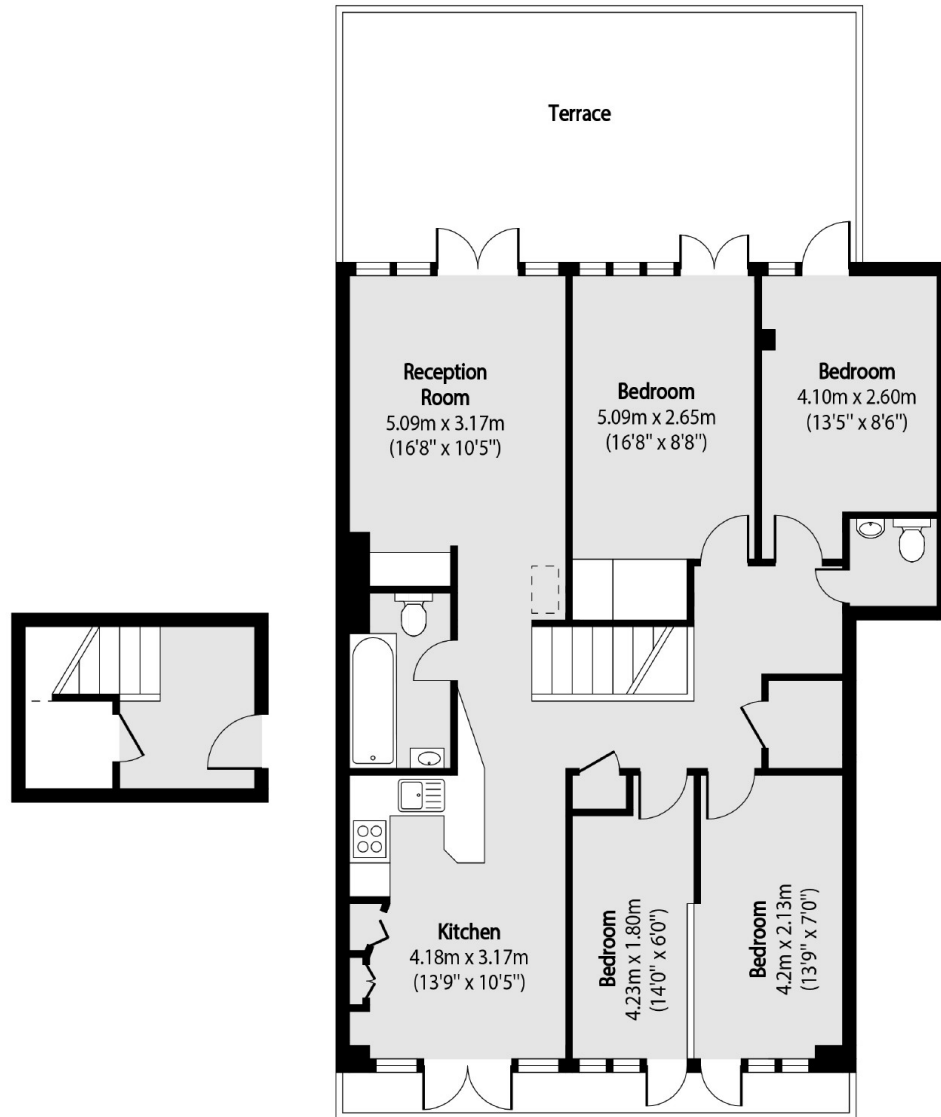
A well presented spacious four bedroom property, situated on the top floor of this popular purpose-built development. Dual aspect windows retain an abundance of natural light, with a shared garden and a large west facing private terrace.

Weedington Road is well located being only 0.5 miles from Kentish Town Station (Northern Line & Thameslink) and 0.3 miles from Gospel Oak (Overground) and the open spaces of Hampstead Heath.

Features

- Four Bedrooms
- Chain Free
- Private Large Terrace
- Close To Amenities
- Long Lease
- Approximately 1,069 sq.ft

Weedington Road, London, NW5



Second Floor
Entrance

Third Floor

Total area (approx): 99.28 sq m (1069 sq. ft)

Terrace area (approx): 28.12 sq m (303 sq. ft)

Dexters

Kentish Town & Camden
274 Kentish Town Road
London
NW5 2AA

Sales
020 7483 6390

Energy Rating: - We aim to make our particulars both accurate and reliable. However they are not guaranteed; nor do they form part of an offer or contract. If you require clarification on any points then please contact us, especially if you're traveling some distance to view. Please note that appliances and heating systems have not been tested and therefore no warranties can be given as to their good working order.

 **RICS** Regulated
Estate Agent
and Letting Agent

dexters.co.uk