



Haverstock Hill, NW3

£650,000

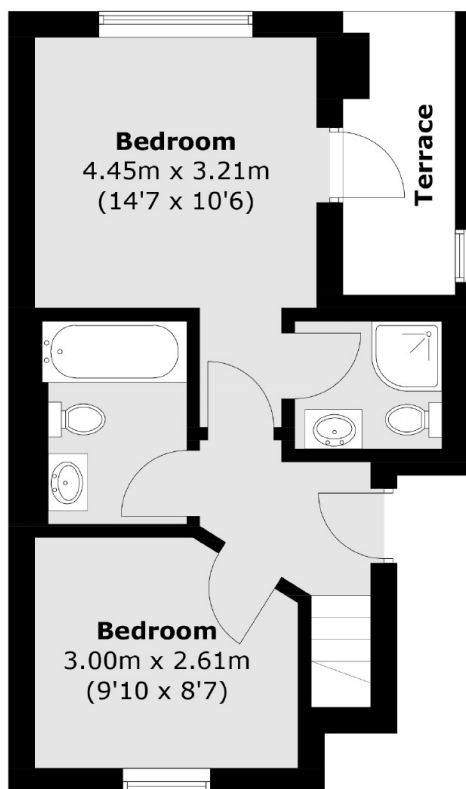
A large two double bedroom split level upper maisonette in Chalk Farm. This bright and modern property features spotlighting, slanted skylights, light wood flooring, two bathrooms as well as South West facing balcony.

Situated at the bottom of Haverstock Hill, Chalk Farm underground and Kentish Town West over ground provide nearest transport links with all the amenities and schools of Camden in close proximity.

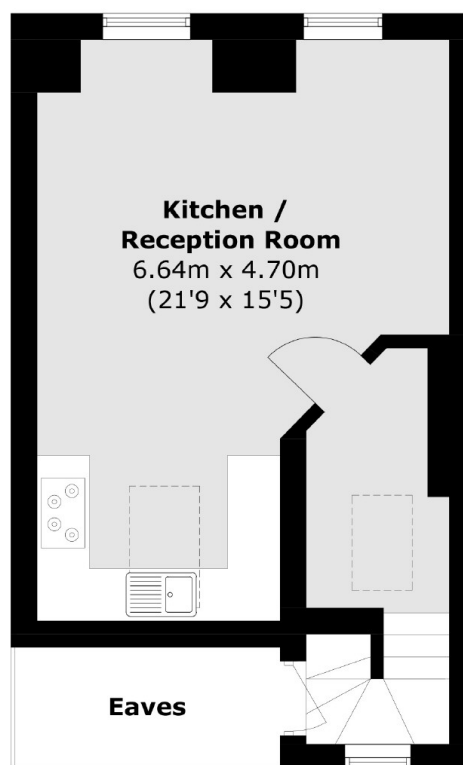
Features

- Split Level Maisonette
- Two Bathrooms
- Skylights
- Wooden Flooring
- Private Balcony
- Transport Links

Haverstock Hill, London, NW3



Second Floor



Third Floor

Total area (approx.): 64.4 sq. m (693.2 sq. ft)
(Excluding Eaves)

Terrace: 4.1 sq. m (44.1 sq. ft)