



Jeffreys Street, NW1

£1,575,000

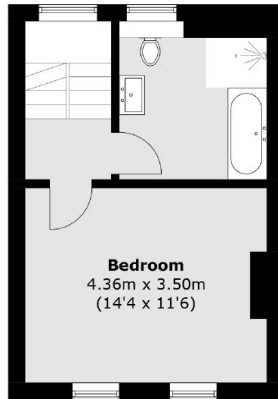
On one of the most sought after roads in Camden is this stunning mid-terrace three double bedroom freehold townhouse with a long private garden.

Jeffreys Street is a pretty one way street with no through access at one end providing a peaceful haven whilst within easy reach of the many amenities nearby. Both Camden Road (Overground) and Camden Town (Northern Line) Stations are a short walk away.

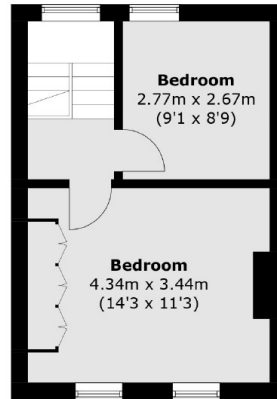
Features

- Three Bedrooms
- Freehold
- Private Garden
- Balcony
- Wood Floors
- Quiet Street

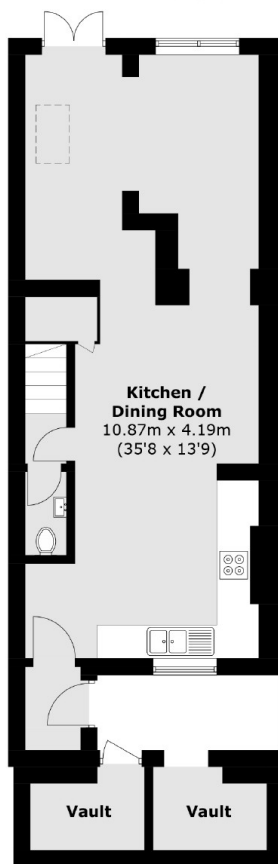
Jeffreys Street, London, NW1



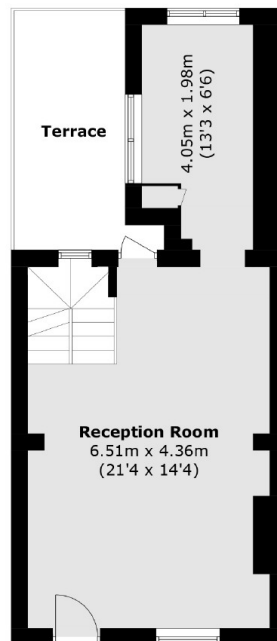
First Floor



Second Floor



Lower Ground Floor



Ground Floor

Total area (approx.): 142.0 sq. m (1,528.4 sq. ft)

Vaults area : 6.4 sq. m (68.9 sq. ft)

Terrace area : 8.9 sq. m (95.8 sq. ft)