



York Way, N7

£650,000

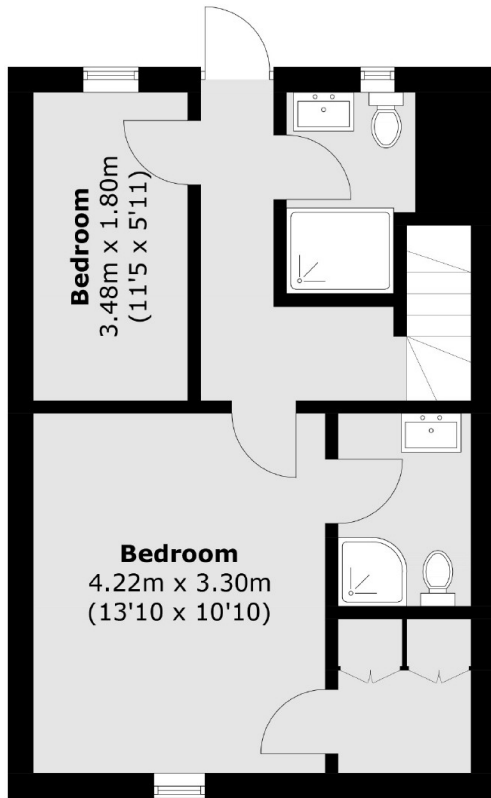
At approximately 791 sq.ft is this fantastic split level, two double bedroom garden flat. This flat has direct access to a great sized garden as well as having its own private entrance.

0.5 miles away from the fantastic Granary Square in Kings Cross. This property is also ideally located for use of local amenities in Camden and on Caledonian Road. Caledonian Underground (Piccadilly Line) is a short walk away.

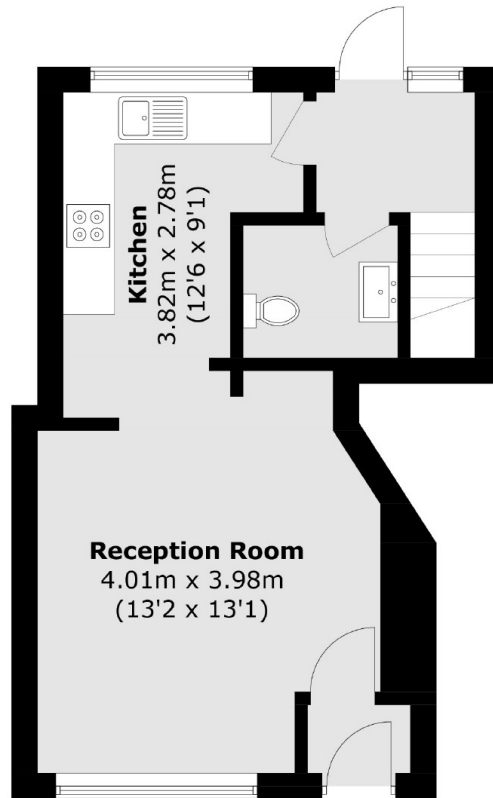
Features

- Two Double Bedrooms
- Private Entrance
- Private Garden
- Good Condition
- Approximately 791 Sq. Ft
- Long Lease

York Way, London, N7



Basement Floor



Ground Floor

Total area (approx.): 73.5 sq. m (791.1 sq. ft)