



## Centric Close, NW1

£750,000

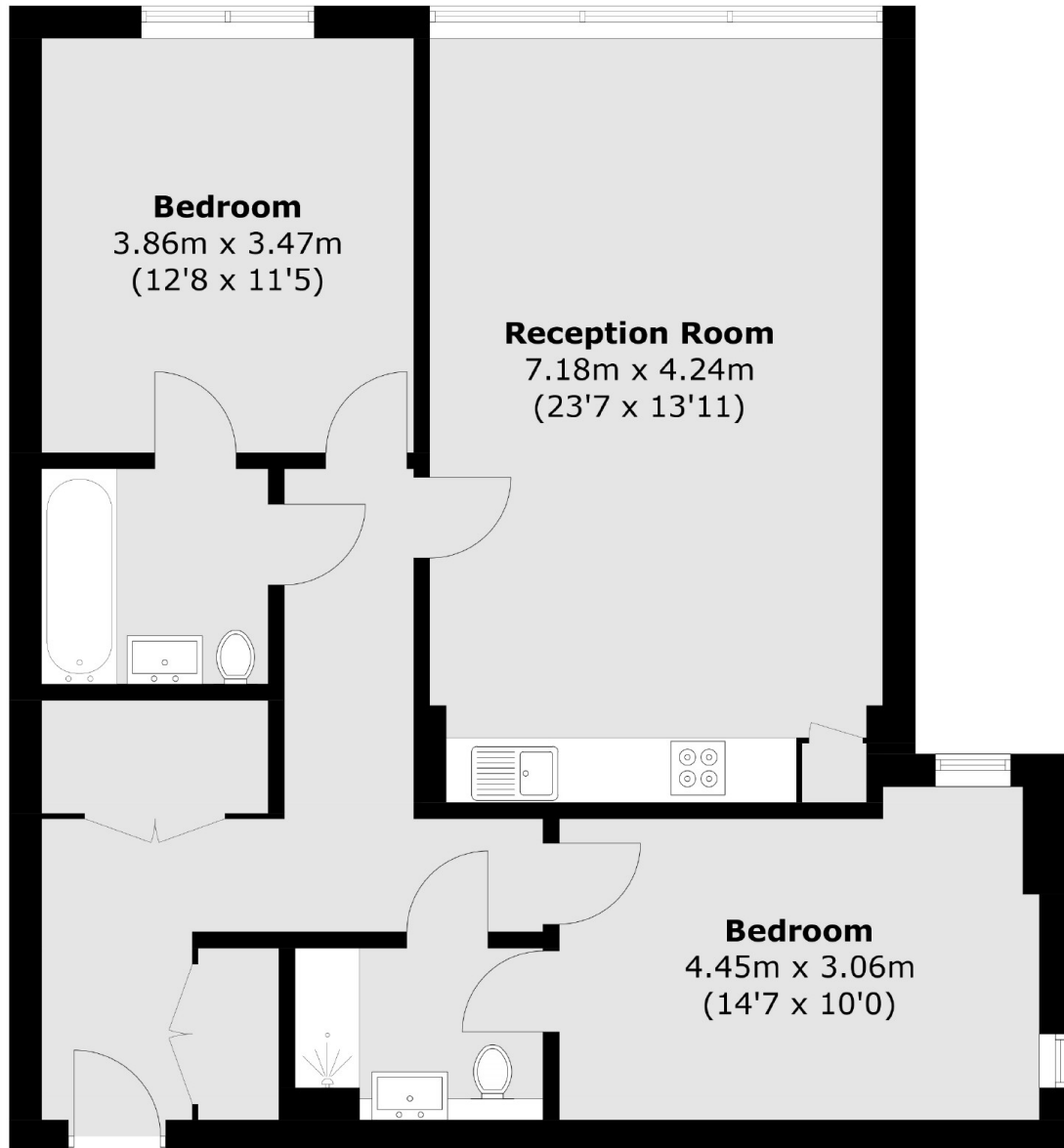
At approximately 893 sq.ft is this two double bedroom two bathroom new build apartment. The property has had only one owner and is very modern with the kitchen and bathroom finished to a high standard. This flat has a fantastic view and the building comes a communal roof garden and lift access.

Centric Close is conveniently located 0.3miles from Camden Town (Northern Line), 0.5 miles from Camden Road (London Overground) and 1.2 miles from Euston (Victoria, Northern and National Rail lines). The green open spaces of Regents Park are less than a 10 minute walk away.

### Features

Two Double Bedroom  
Approximately 893 Sq.Ft  
Two Bathrooms  
Communal Roof Garden  
Long Lease  
Excellent Location

# Centric Close, London, NW1



Total area (approx.): 83.0 sq. m (893.4 sq. ft)