

Weedington Road, NW5

£369 Per week

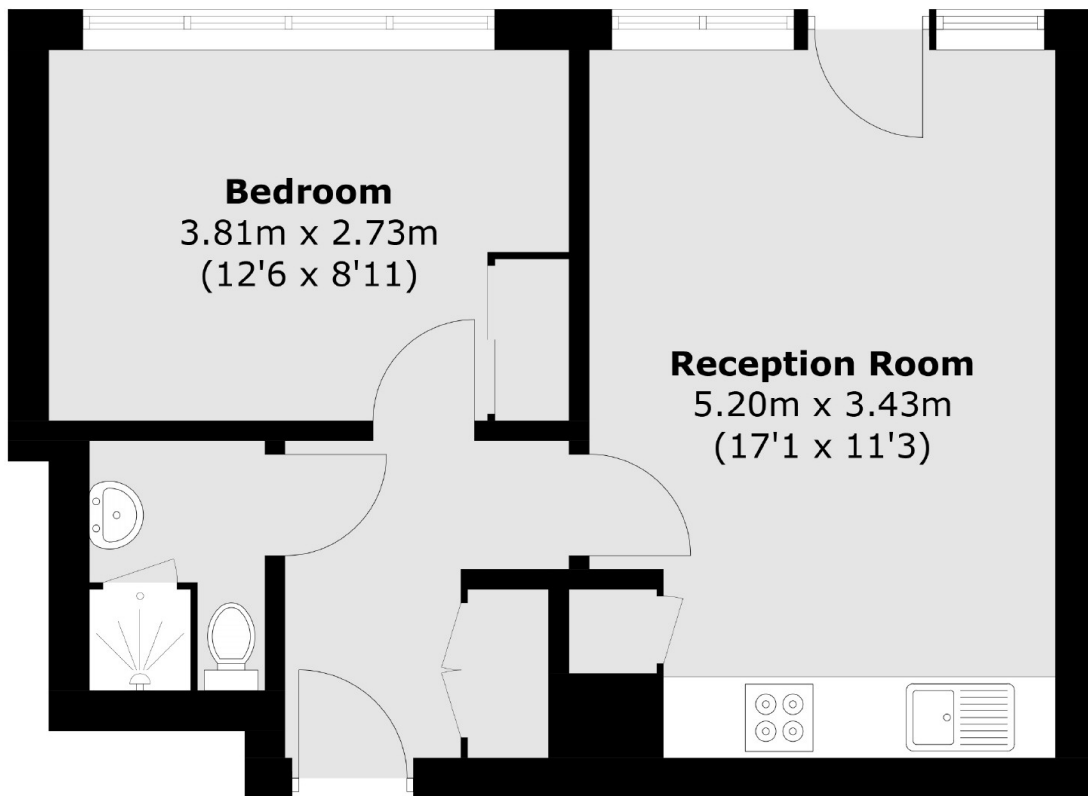
Available to key workers/civil service employees only. A spacious one bedroom property in excellent condition close to the Northern Line and London Overground stations. The property offers an open plan living area with modern kitchen, double bedroom, contemporary bathroom and wooden floors throughout.

The property offers easy access to all the shops, restaurants and bars of Kentish Town Road and Chalk Farm. Camden and Primrose Hill are also nearby hosting a large number of popular dining and entertainment facilities.

Features

- Ground Floor
- Spacious
- Good Location
- Modern
- Wooden Floors
- Ample Storage

Weedington Road, London, NW5



Total area (approx.): 37.9 sq. m (407.9 sq. ft)