



Kentish Town Road, NW1

£634 Per week

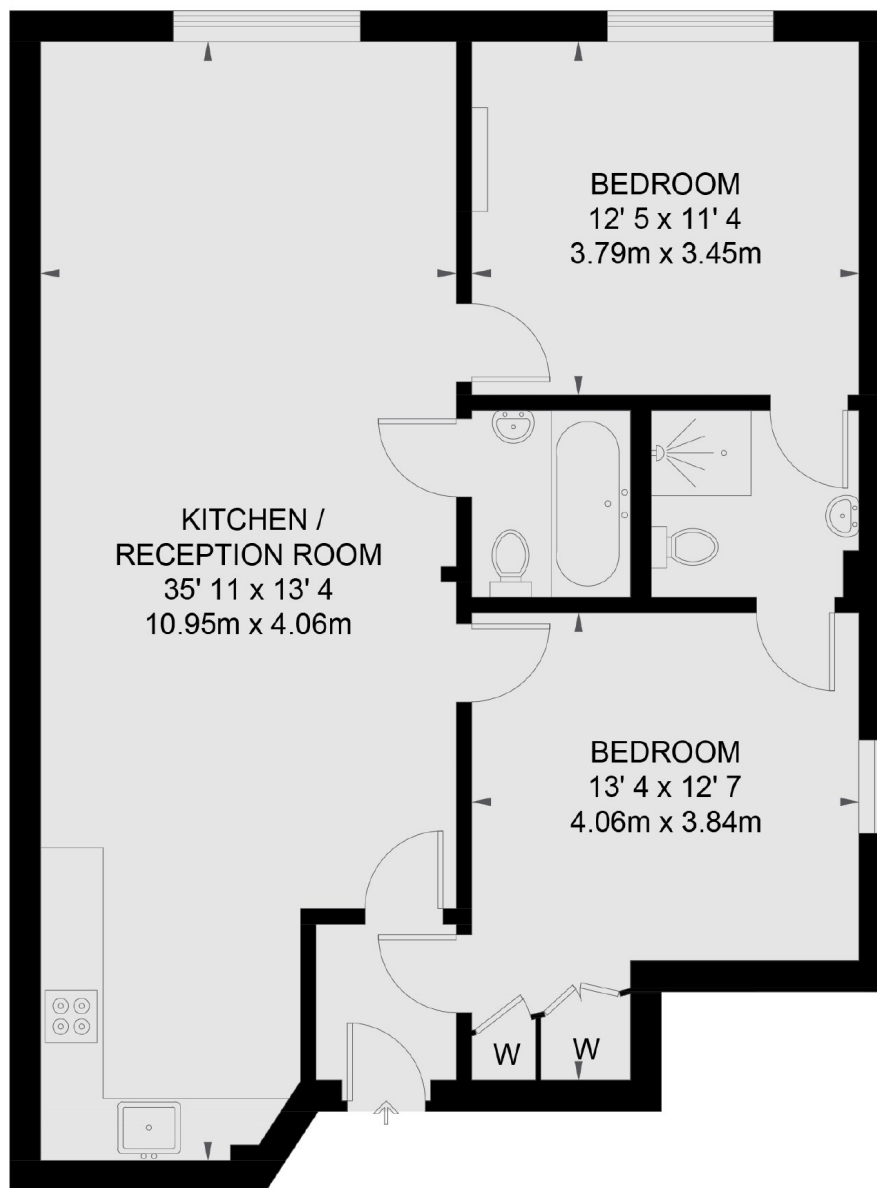
A stunning two double bedroom apartment located on the fifth floor of a modern block in the heart of Kentish Town. The property has excellent views, lift access, a very spacious open plan living room, two large bedrooms and two modern bathrooms.

Located in the heart of Kentish Town and within close proximity to Camden Town, offering numerous transport links on London's Underground lines, Overground and Thames link. The green open spaces of Regents Park and Primrose Hill are also nearby.

Features

- Purpose Built Block
- Two Double Bedrooms
- Two Bathrooms
- Modern Apartment
- Wood Flooring
- Spacious Rooms

Kentish Town Road, London, NW1



FIFTH FLOOR

TOTAL APPROX. FLOOR AREA 868 SQ. FT. (80.6 SQ. M.)