



Jamestown Road, NW1

£634 Per week

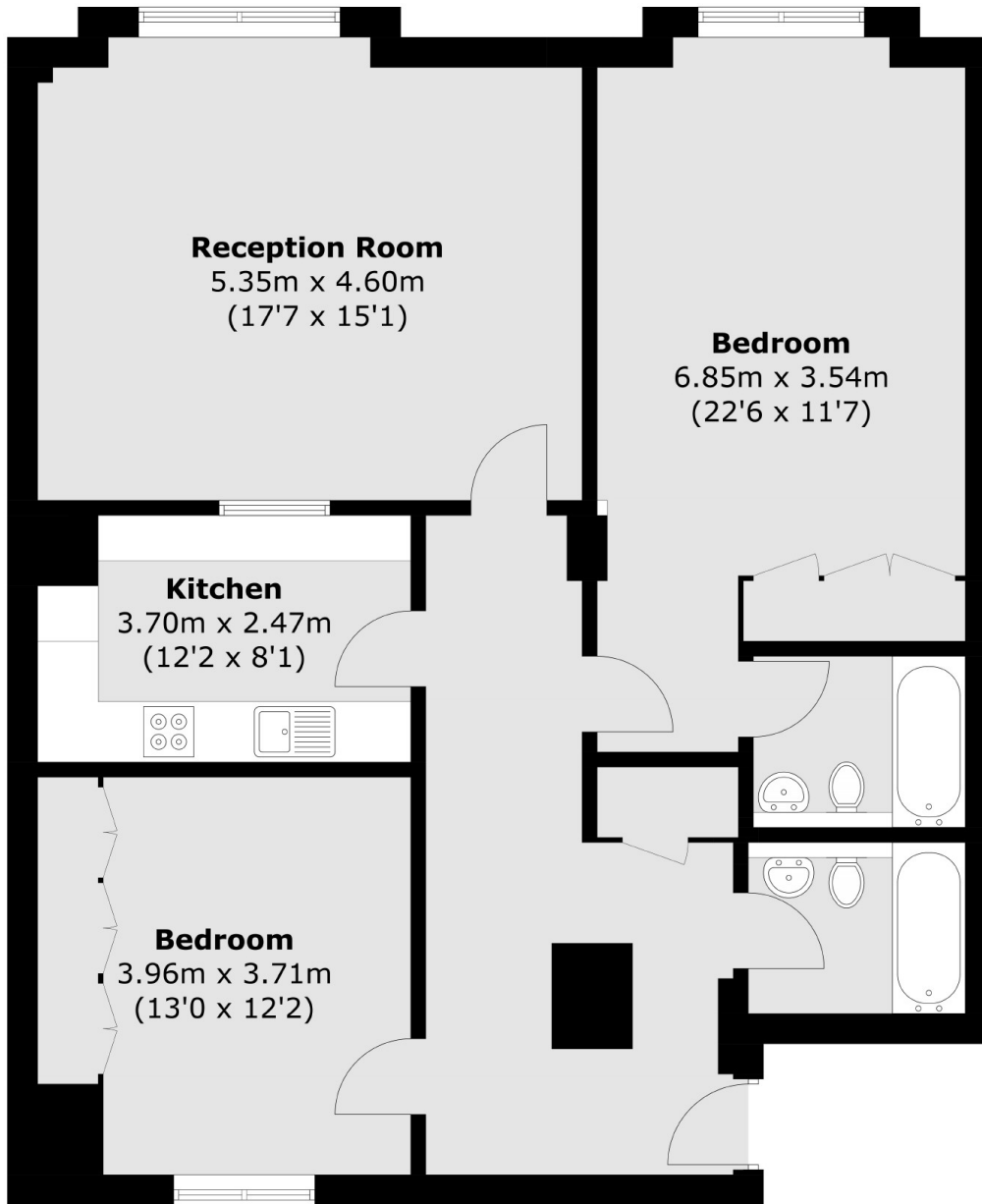
A spacious two double bedroom apartment in an attractive development moments from Camden, Regents Park and Primrose Hill. The property is generously sized boasting two bathrooms, double bedrooms, large living area, good storage and concierge service.

Formerly a gin warehouse Gilbey House is just moments from Camden Town, Primrose Hill and Regents Park offering a fantastic mix of entertainment, retail and dining options all within easy reach.

Features

- Double Bedrooms
- Secure Development
- Concierge Service
- Two Bathrooms
- Large Living Area
- Great Location

Jamestown Road, London, NW1



Total area (approx.): 99.1 sq. m (1,066.7 sq. ft)