



Leighton Grove, NW5 £500,000

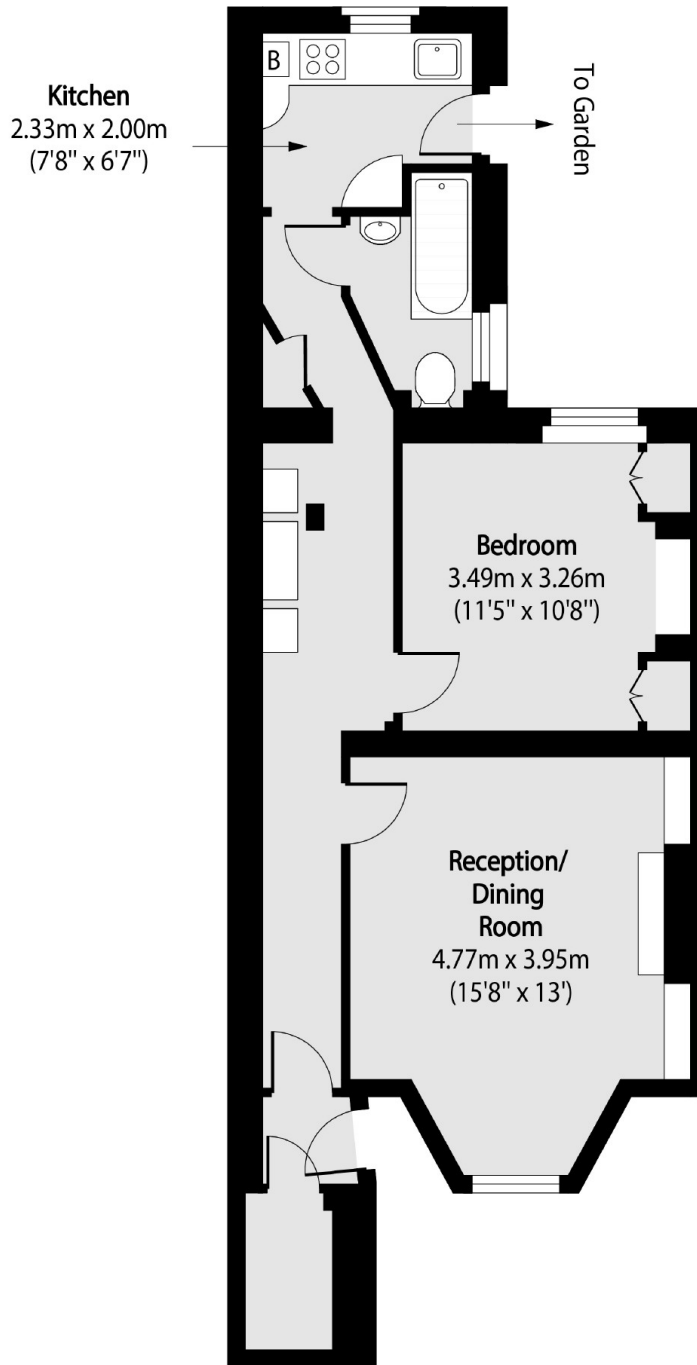
This stunning one double bedroom apartment has been finished to an excellent standard throughout. The property has lovely wood flooring, a separate living room and a modern kitchen with direct access to a private courtyard.

Leighton Grove is moments away from Kentish Town High street and offers a wide variety of shops, cafés and restaurants as well as tube and rail links from Kentish Town Underground (Northern Line) and Thameslink station.

Features

- One Double Bedroom
- Fantastic Condition
- Long Lease
- Private Courtyard
- Quiet Tree Lined Road
- Private Entrance

Leighton Grove, London, NW5



Total area (approx): 52.02 sq m (560 sq. ft)