



Willingham Terrace, NW5

£357,000

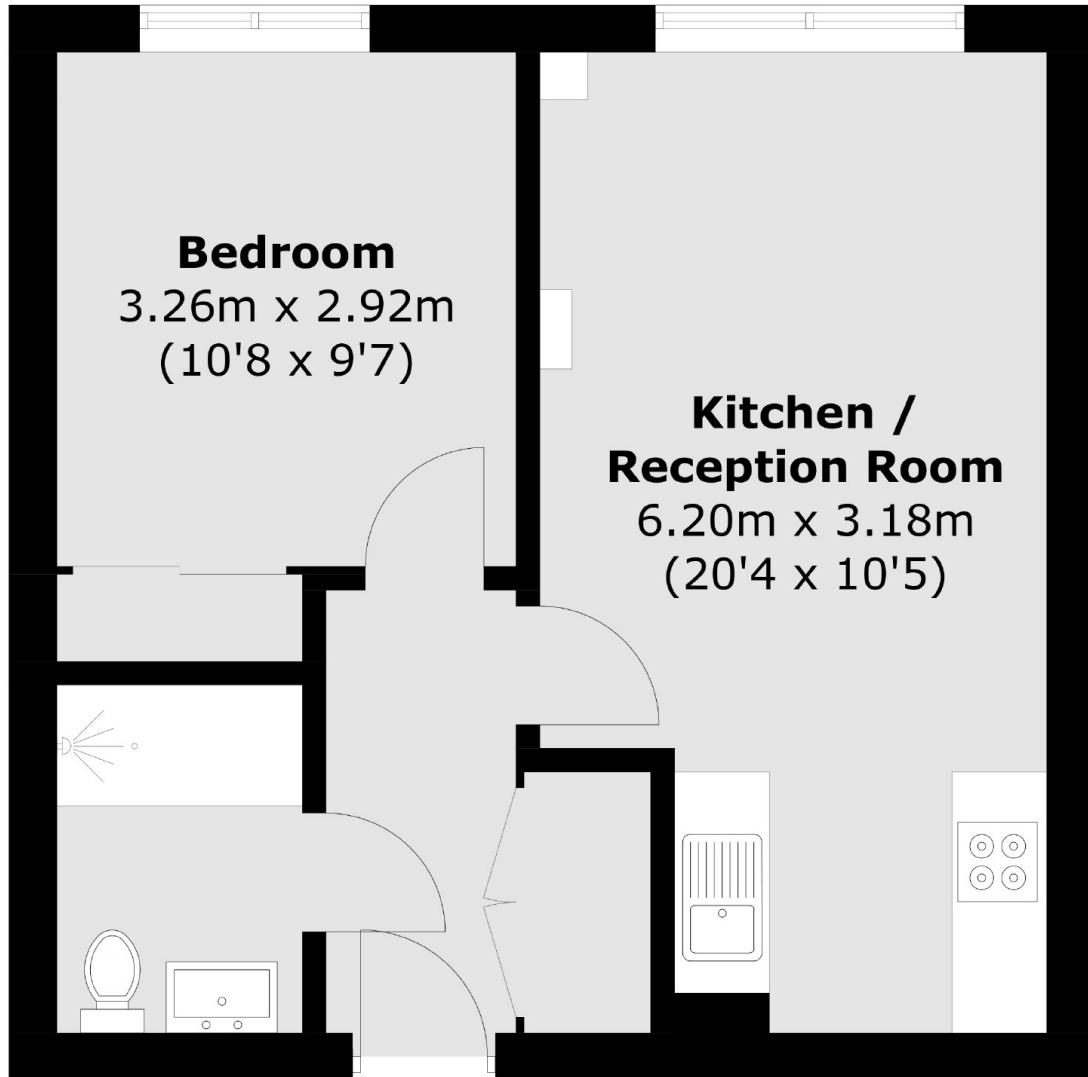
This stunning one double bedroom apartment. Forming part of this newly built development is this spacious property with wood flooring, modern appliances and access to a communal garden.

Willingham Terrace is close to all the local amenities, shops and restaurants of Kentish Town. The property is close to Kentish Town station (Northern line and Thameslink) and Tufnell Park tube (Northern line) and is in the catchment for Camden School for Girls, Eleanor Palmer, the school CFBL and the nursery Les Petites Etoiles.

Features

- One Double Bedroom
- Long Lease
- Chain Free
- Modern Development
- Communal Garden
- Pocket Living

Willingham Terrace, London, NW5



Total area (approx.): 38.9 sq. m (418.7 sq. ft)

Dexters

Kentish Town & Camden
274 Kentish Town Road
London
NW5 2AA
Sales
020 7483 6390

Energy Rating: B. We aim to make our particulars both accurate and reliable. However they are not guaranteed; nor do they form part of an offer or contract. If you require clarification on any points then please contact us, especially if you're traveling some distance to view. Please note that appliances and heating systems have not been tested and therefore no warranties can be given as to their good working order.

 **RICS** | Regulated
Estate Agent
and Letting Agent

dexters.co.uk