

Willingham Terrace, NW5

£385,000

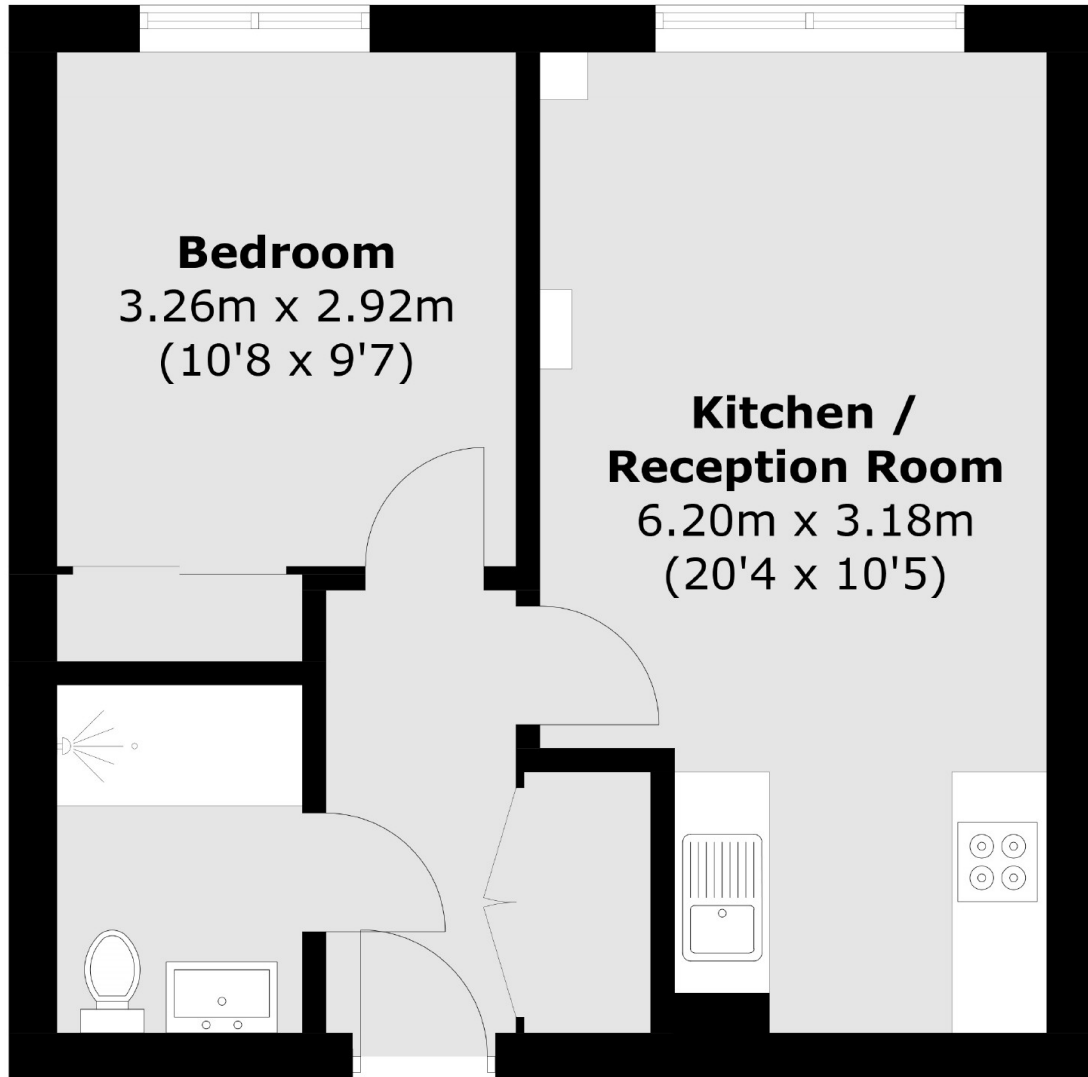
This stunning one double bedroom apartment. Forming part of this newly built development is a spacious property with wood flooring, modern appliances and access to a communal garden.

Willingham Terrace is close to all the local amenities, shops and restaurants of Kentish Town. The property is close to Kentish Town station (Northern line and Thameslink) and Tufnell Park tube (Northern line) and is in the catchment for Camden School for Girls, Eleanor Palmer, the school CFBL and the nursery Les Petites Etoiles.

Features

- One Double Bedroom
- Long Lease
- Chain Free
- Modern Development
- Communal Garden
- Built In 2017

Willingham Terrace, London, NW5



Total area (approx.): 38.9 sq. m (418.7 sq. ft)