



Pratt Mews, NW1

£750,000

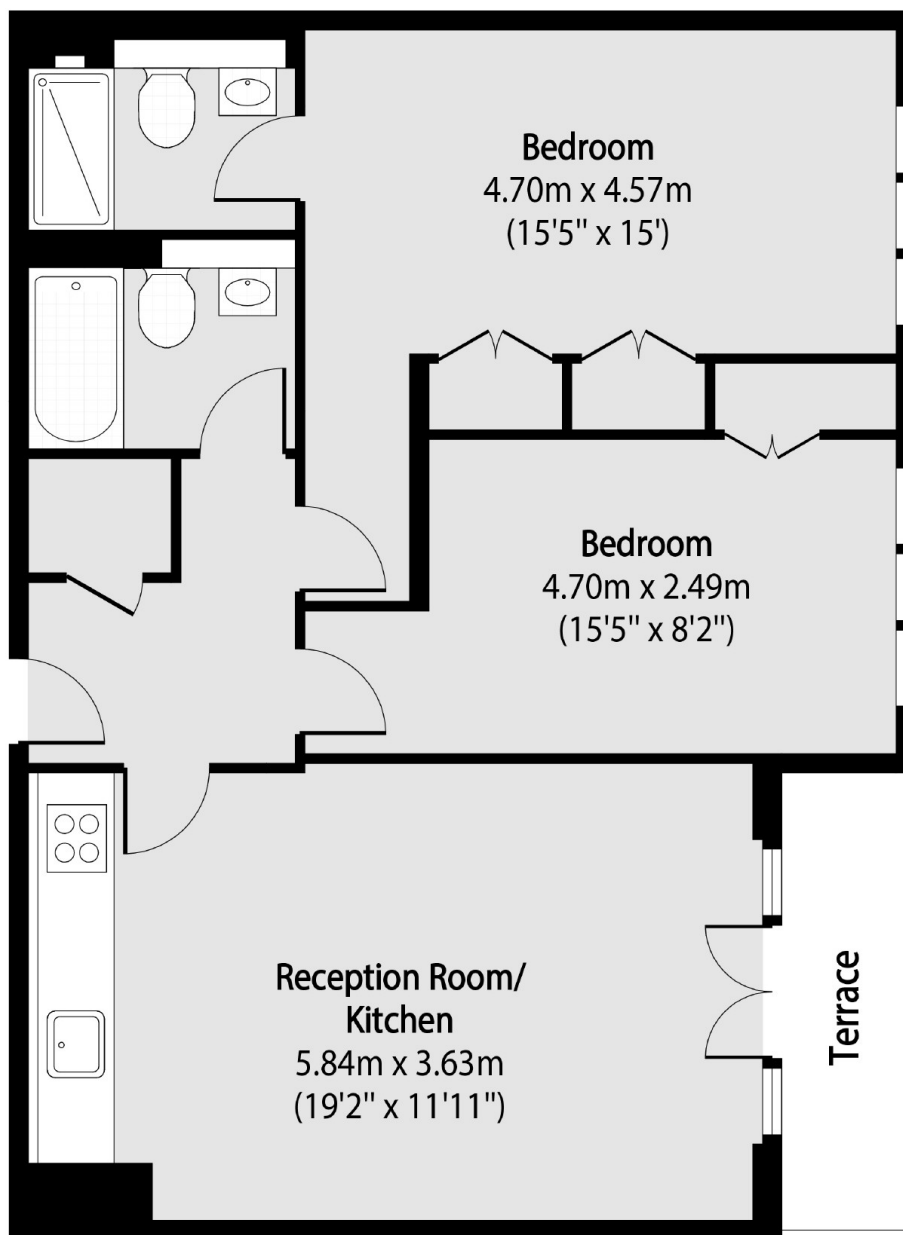
A very stylish two double bedroom, two bathroom apartment set in this mews development located in the heart of Camden Town. The apartment has a modern open plan kitchen / living room with access to a private south facing terrace.

Located in the heart of Camden Town and within close proximity to Kings Cross offering numerous transport links on London's Underground lines and both National and International rail lines. The green open spaces of Regents Park and Primrose Hill are also nearby.

Features

- Two Double Bedrooms
- Two Bathrooms
- Private Terrace
- Mews Development
- Lift
- Share Of Freehold

Pratt Mews, London, NW1



Total area (approx): 61.22 sq m (659 sq. ft)

Terrace total area (approx): 3.62 sq m (39 sq. ft)