



Collard Place, NW1

£735,000

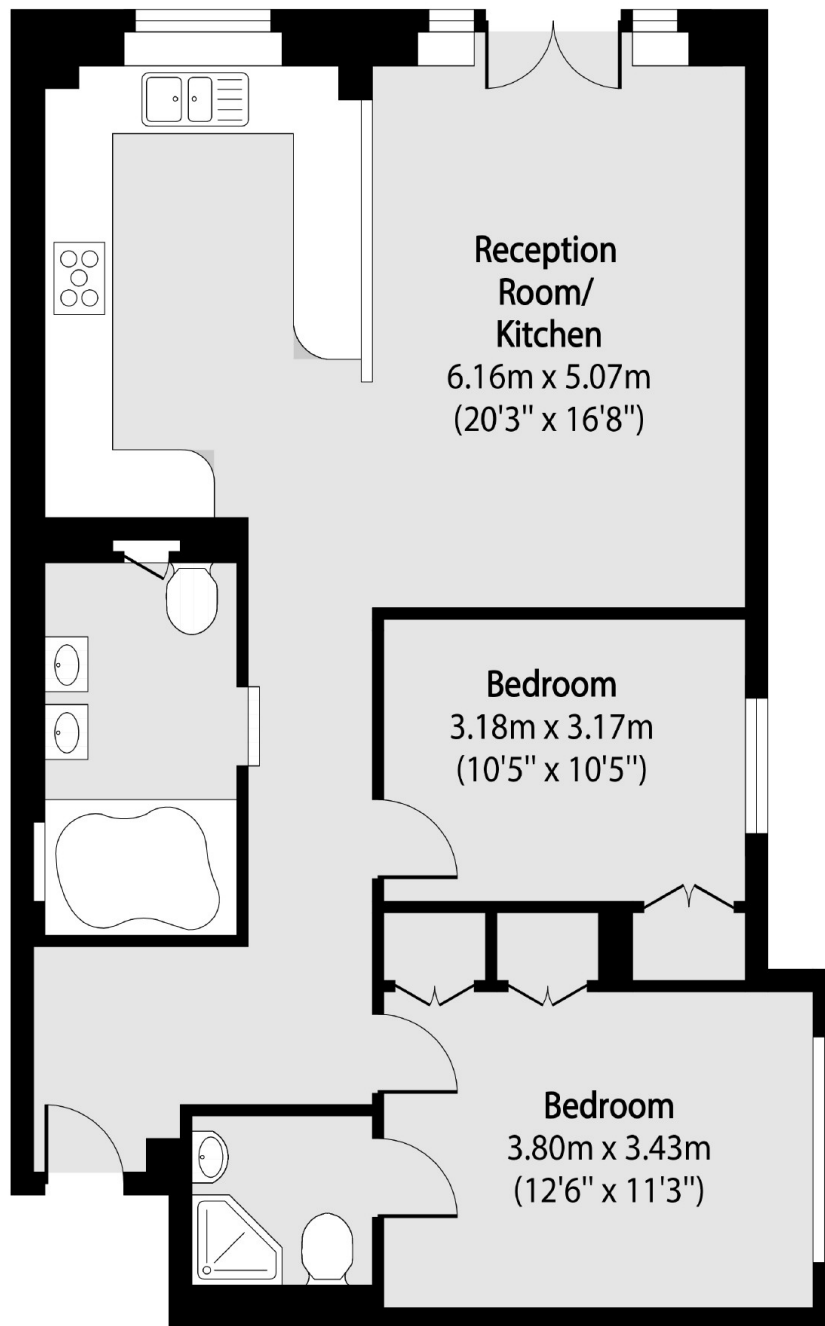
Forming part of this popular secure complex is this stunning two double bedroom apartment on the second floor. The property is in excellent condition throughout, with lovely wood flooring, a modern open plan kitchen / living room and a Juliette balcony

Collard Place is conveniently located to the amenities in Camden, Primrose Hill and Belsize Park. Chalk Farm Underground Station is also 0.4 miles away.

Features

- Two Bedrooms
- Two Bathrooms
- Parking Parking Space
- Gated Development
- Second Floor
- Fantastic Condition

Collard Place, London, NW1



Total area (approx): 68.54 sq m (738 sq. ft)