

Grafton Terrace, NW5

£675,000

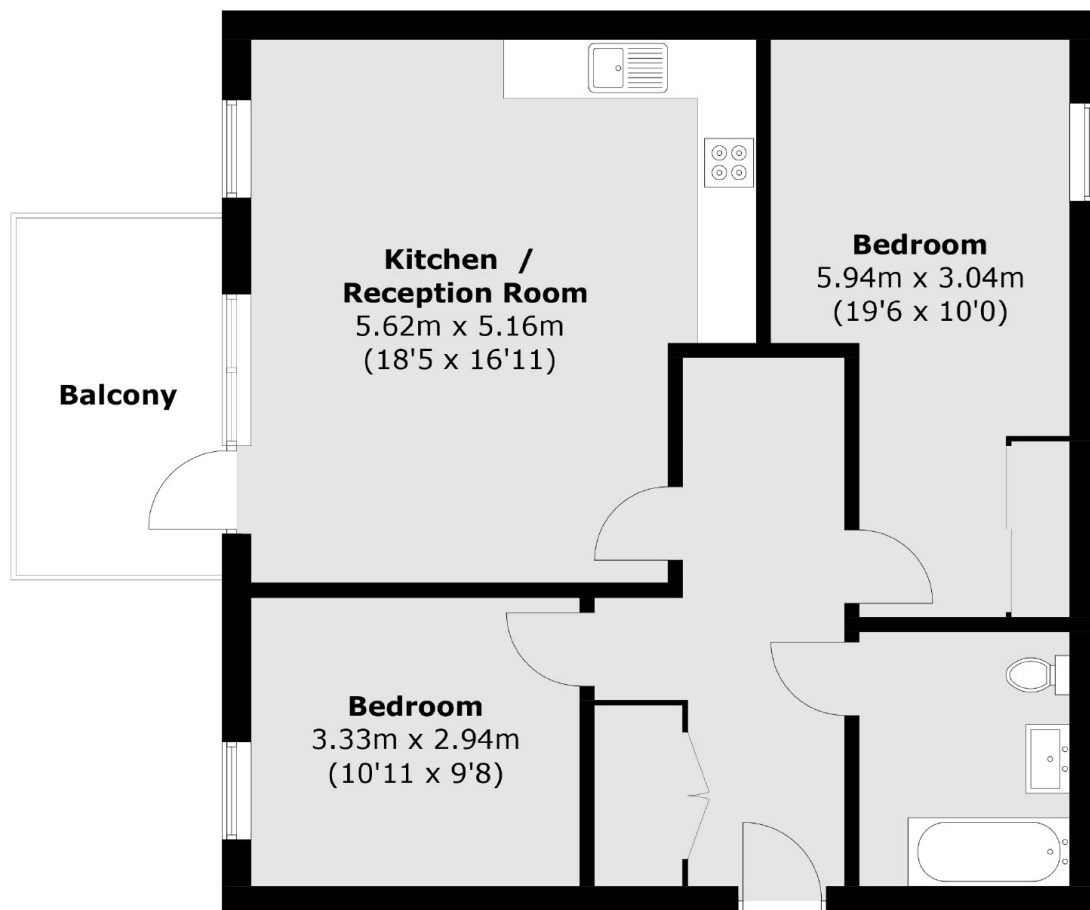
A well laid out two bedroom one bathroom apartment set within in this carefully crafted, boutique development. This apartment offers an open plan kitchen-living area with integrated appliances.

Grafton Terrace is located within close proximity to all the local amenities of Belsize Park, Hampstead and Kentish Town providing easy access to Belsize Park underground (0.6 miles) and Hamspetad Heath overground stations (0.7 miles) and to the open spaces of both Primrose Hill and Hampstead Heath.

Features

- Two Double Bedrooms
- Long Lease
- Chain Free
- One Bathroom
- New Development
- Private Balcony

Grafton Terrace, London, NW5



Total area (approx.): 72.5 sq. m (780.4 sq. ft)
Balcony: 7.7 sq. m (82.9 sq. ft)