



Leighton Grove, NW5

£525,000

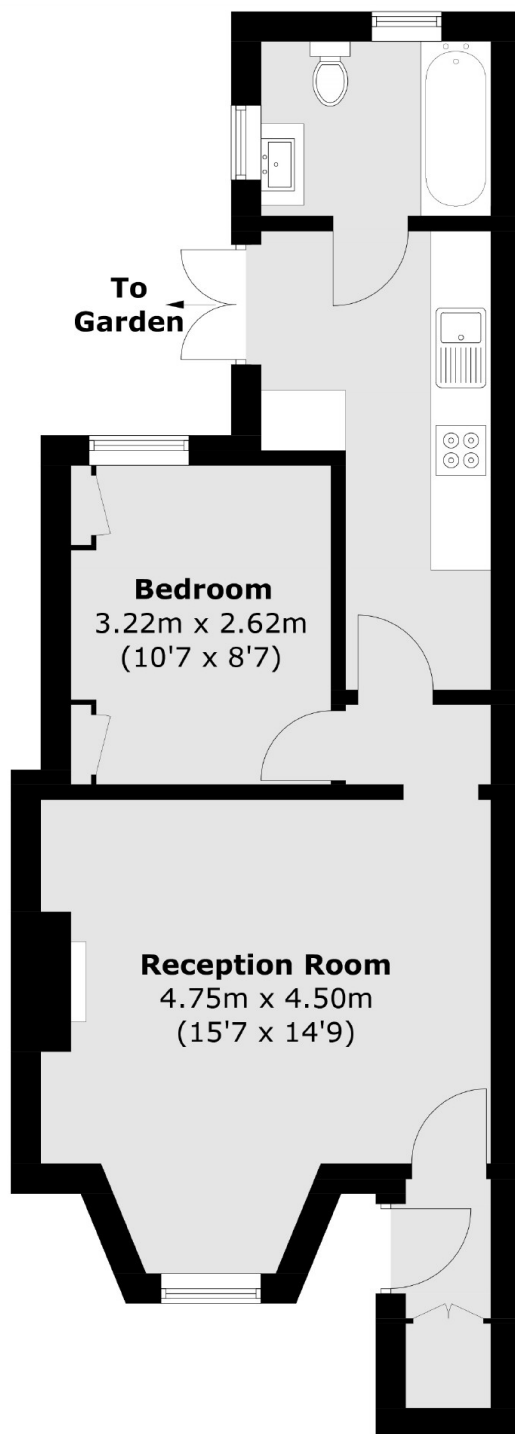
This large garden flat is located within a period property, with its own entrance and use of a rear private garden, accessible off the kitchen.

Leighton Grove is moments away from Kentish Town High street and offers a wide variety of shops, cafés and restaurants as well as tube and rail links from Kentish Town Underground (Northern Line) and Thameslink station.

Features

- One Double Bedroom
- Long Lease
- Chain Free
- Private Courtyard
- High Ceilings
- Quiet Tree Lined Road

Leighton Grove, London, NW5



Total area (approx.): 44.6 sq. m (480.1 sq. ft)