



Grafton Road, NW5

£450,000

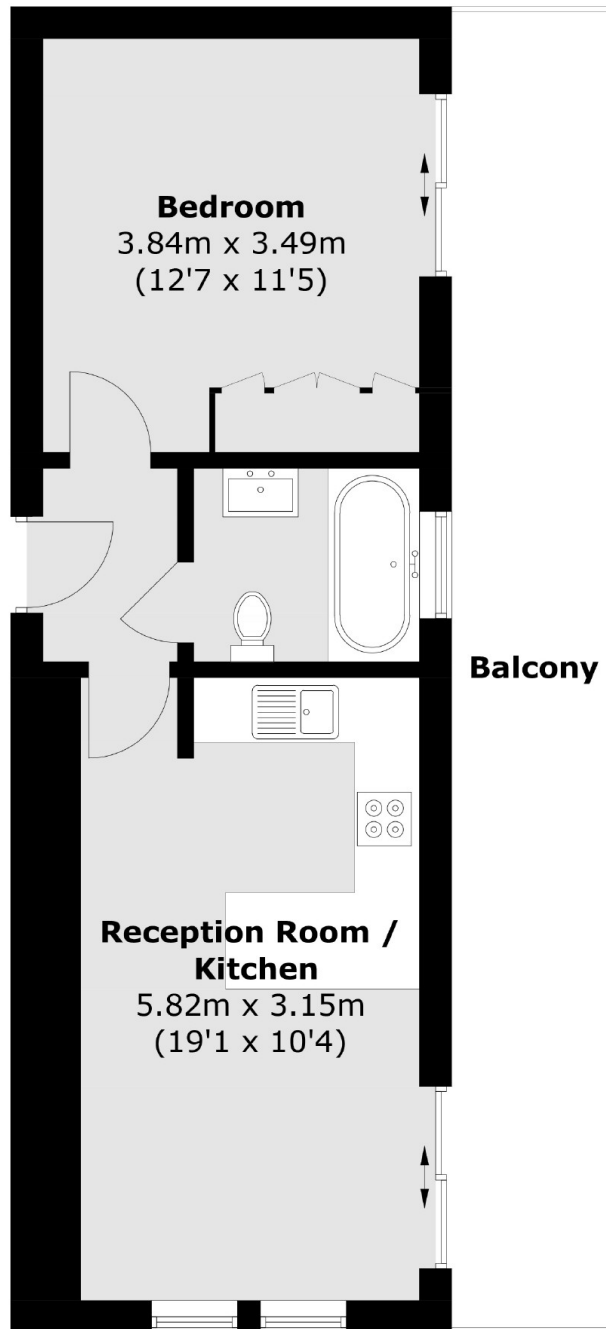
Forming part of this popular modern purpose built block is this spacious one double bedroom apartment. The flat is approximately 483 sq.ft and is in fantastic condition through out, with a modern bathroom, an open plan kitchen / living room plus a private 198 sq.ft balcony that has a great view of the city.

Grafton Road is a short walk from the Parliament Hill entrance to Hampstead Heath with easy access to the open air lido and amazing views over London. Gospel Oak overground station is the closest station, with Kentish Town underground also close by.

Features

- One Bedroom
- Fantastic Condition
- Long Lease
- Open Plan Kitchen
- Approximately 483 Sq.Ft
- Lift

Grafton Road,
London, NW5



Total area (approx.): 39.7 sq. m (427.3 sq. ft)
Balcony: 18.4 sq. m (198.0 sq. ft)

Dexters

Kentish Town & Camden
274 Kentish Town Road
London
NW5 2AA
Sales
020 7483 6390

Energy Rating: C. We aim to make our particulars both accurate and reliable. However they are not guaranteed; nor do they form part of an offer or contract. If you require clarification on any points then please contact us, especially if you're traveling some distance to view. Please note that appliances and heating systems have not been tested and therefore no warranties can be given as to their good working order.

 **RICS** | Regulated
Estate Agent
and Letting Agent

dexters.co.uk