



## Wordsworth Place, NW5

£550,000

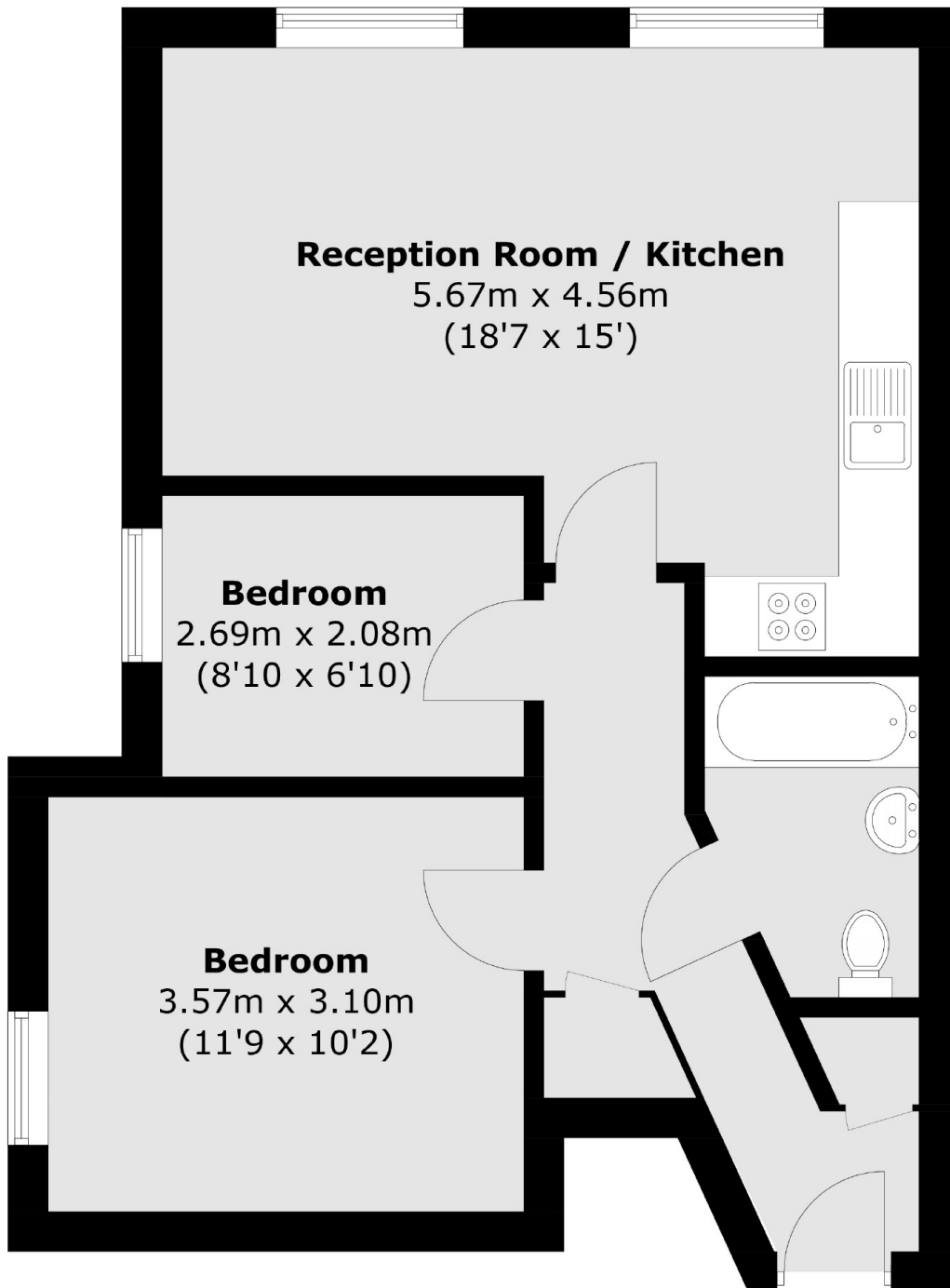
At approximately 548 sq ft is this superb bright and spacious, two-bedroom apartment located on the first floor of a modern purpose-built development.

Wordsworth Place is located within close proximity to all the local amenities of Belsize Park, Hampstead and Kentish Town providing easy access to Belsize Park underground ( 0.6 miles ) and Hampstead Heath overground stations (0.7 miles )

### Features

- Two Bedrooms
- Secured Development
- Over 50s
- Parking
- Communal Gardens
- One Bathroom

# Wordsworth Place, London, NW5



Total area (approx.): 51 sq. m (548 sq. ft)