



Camden Road, NW1

£475,000

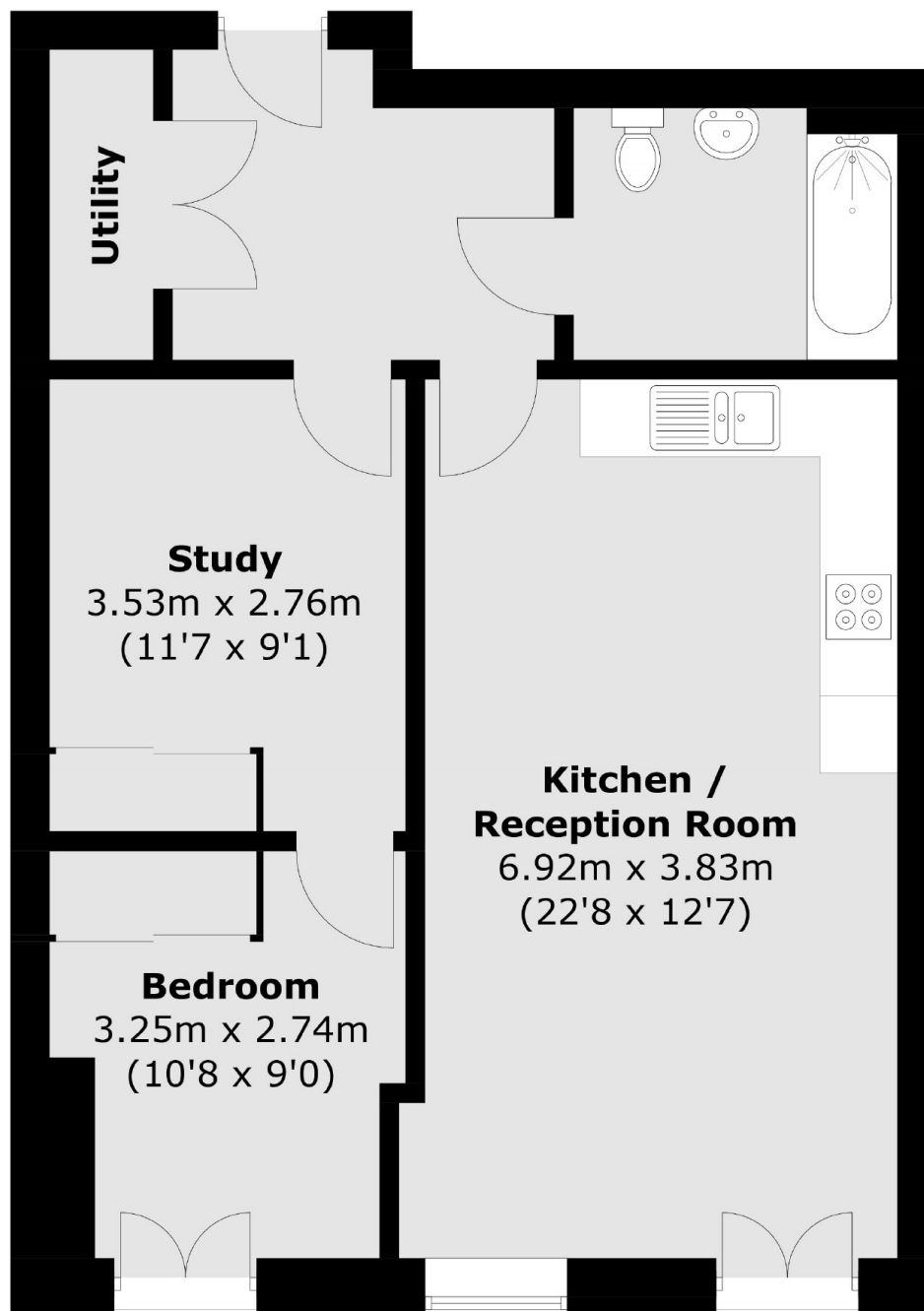
A stunning one double bedroom apartment with a separate study in a contemporary canal side development, designed by Squire & Partners. The apartment extends to 644 sq ft and has a modern, open plan layout.

Camden Town underground (Northern line) and Camden Road overground are well within half a mile of the property. Trendy Granary Square and the newly opened Coal Drops Yard shopping centre are also only a mile away.

Features

- One Double Bedroom
- Separate Study
- Concierge
- Lift
- Views
- Gated Courtyard

Camden Road, London, NW1



Total area (approx.): 59.9 sq. m (644.7 sq. ft)