

## Georgiana Street, NW1

### £333,000

This studio apartment is situated on the first floor of a beautiful period conversion and is in good condition throughout. The property has wood flooring, large windows, high ceilings and a separate bathroom.

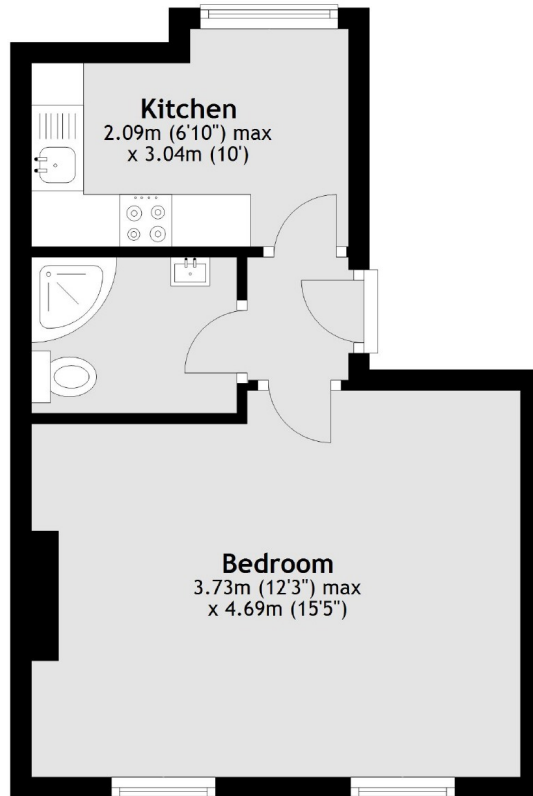
The open gardens of Regents Park and the breath-taking views of the city from Primrose Hill are within a mile. There are several local transport links nearby, including Camden Town, Euston and Kings Cross and St. Pancras.

### Features

- Studio
- Good Condition
- Chain Free
- Long Lease
- Centrally located
- First Floor

# Georgiana Street, London, NW1

## First Floor



Total area: approx. 27.4 sq. metres (295.4 sq. feet)