



Grafton Road, NW5

£380,000

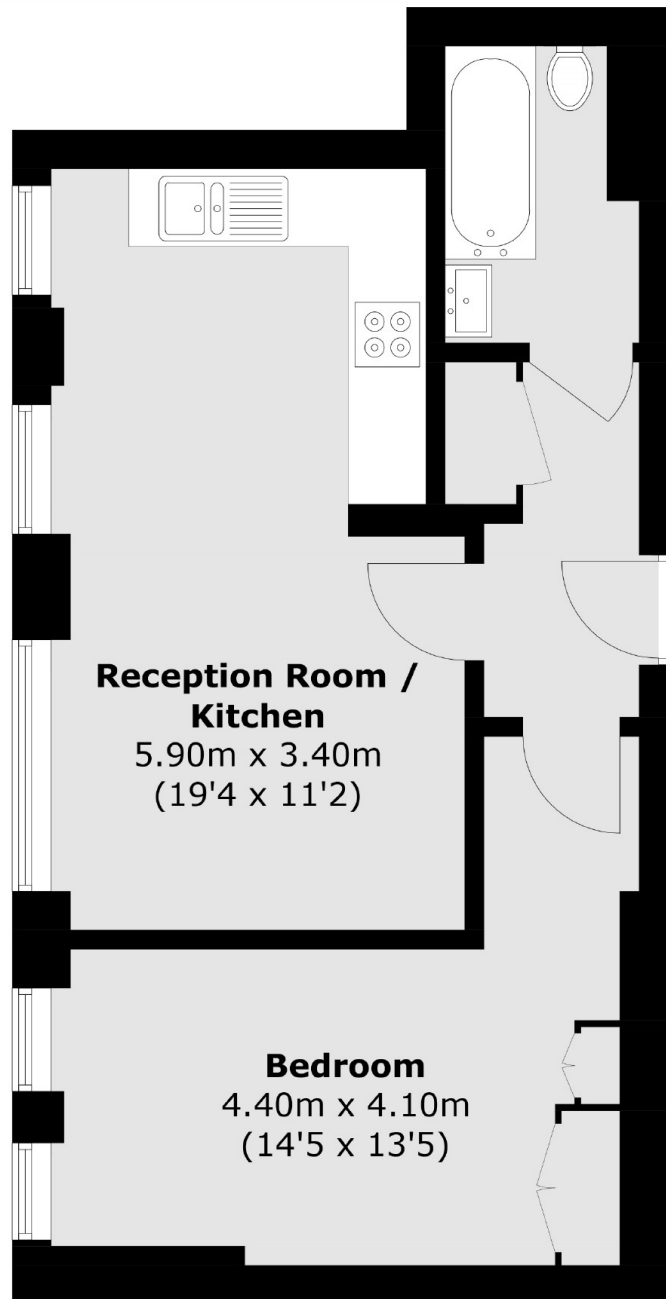
A one bedroom apartment set on the second floor of this purpose built block of flats. The flat is approximately 429 sq ft and is in fantastic condition throughout, with a modern bathroom and an open plan kitchen/living room.

Grafton Road is a short walk from the Parliament Hill entrance to Hampstead Heath, with easy access to the open air lido and amazing views over London. Kentish Town West overground station is the closest station, with Kentish Town underground also close by.

Features

- One Bedroom
- Fantastic Condition
- Long Lease
- Open Plan Kitchen
- Approximately 429 Sq.Ft
- Chain Free

Grafton Road,
London, NW5



Total area (approx.): 39.9 sq. m (429.5 sq. ft)

Dexters

Kentish Town & Camden
274 Kentish Town Road
London
NW5 2AA
Sales
020 7483 6390

Energy Rating: . We aim to make our particulars both accurate and reliable. However they are not guaranteed; nor do they form part of an offer or contract. If you require clarification on any points then please contact us, especially if you're traveling some distance to view. Please note that appliances and heating systems have not been tested and therefore no warranties can be given as to their good working order.

 **RICS** | Regulated
Estate Agent
and Letting Agent

dexters.co.uk