



## Camden Road, NW1

£855,000

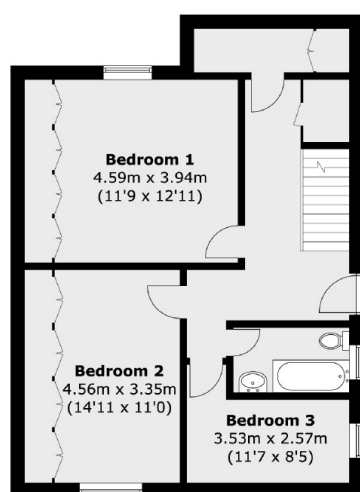
In the heart of Camden is this sun filled three bedroom flat with period features throughout and floor-to-ceiling windows with shutters. The property has an open plan kitchen, a separate reception room and direct access to a large garden.

The many attractions of Camden Town are within easy reach and the nearest underground stations are Kentish Town (Northern line and Thameslink) and Caledonian Road (Piccadilly line).

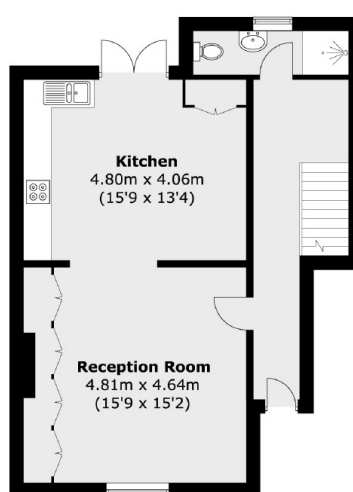
### Features

Three Bedrooms  
Split-Level  
Chain Free  
Garden  
Approximately 1,299 Sq.Ft  
Private Outhouse

Camden Road,  
London, NW1



**Lower Ground Floor**



**Ground Floor**

Total area (approx.): 120.7 sq. m (1299 sq. ft)