



Kentish Town Road, NW1

£550,000

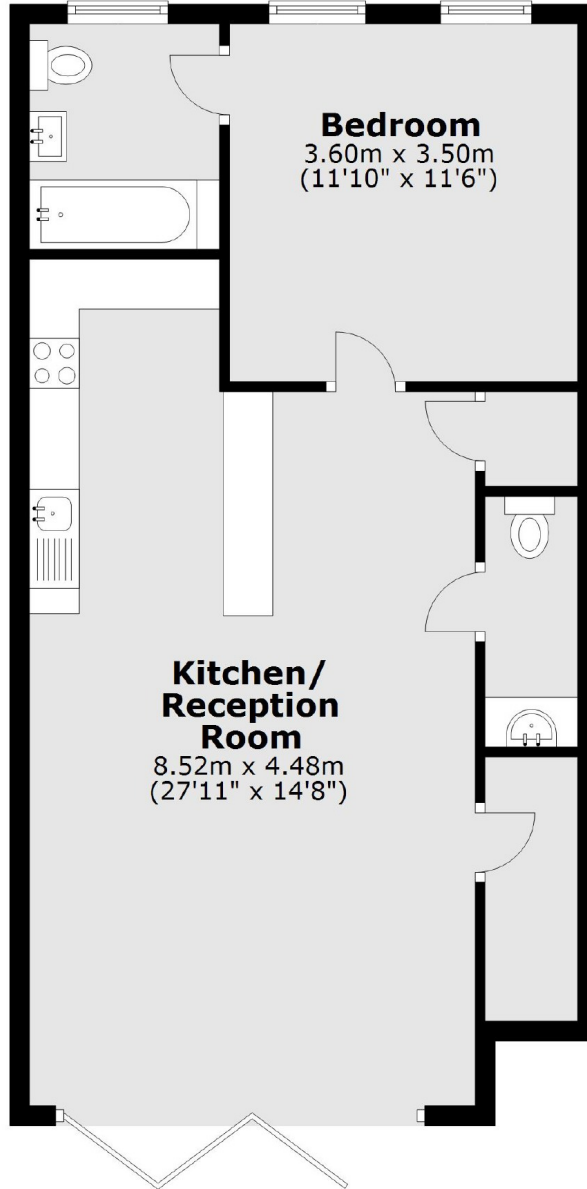
This stunning one double bedroom apartment has been finished to an excellent standard throughout. The property has lovely wood flooring, a modern open plan kitchen / living room with bi-folding doors that lead out to an immaculate private courtyard.

Kentish Town Road is well situated for the Underground (Northern Line), Thameslink station, multiple bus routes as well as the shops, bars, restaurants and local amenities on the high street.

Features

- One Double Bedroom
- Open Plan Kitchen / Reception
- Chain Free
- Long Lease
- Excellent Condition
- Approximately 636 sq.ft

Kentish Town Road,
London, NW1



Total area: approx. 59.1 sq. metres (636.4 sq. feet)