



Kentish Town Road, NW1

£725,000

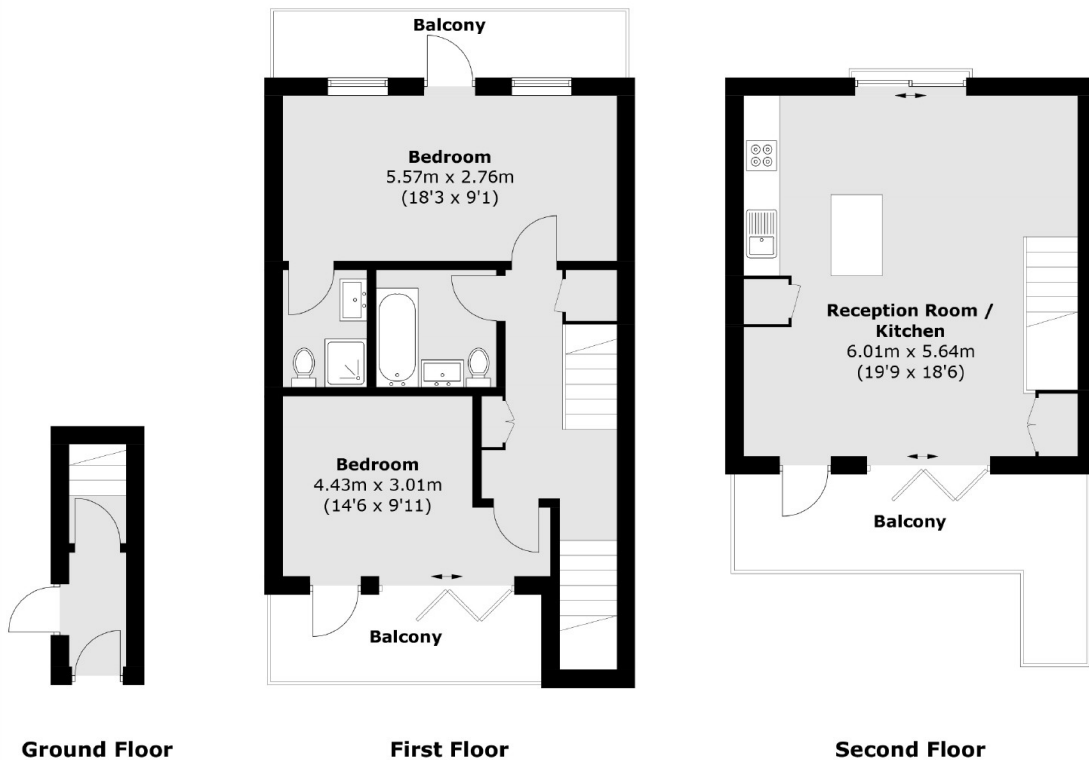
At approximately 907 sq.ft is this modern two bedroom split level apartment. With wood floors and impressive high ceilings throughout, the flat has a modern open plan kitchen / living room and access to three private terraces.

Kentish Town Road is well situated for the Underground (Northern Line), Thameslink station, multiple bus routes as well as the shops, bars, restaurants and local amenities on the high street.

Features

- Two Double Bedrooms
- Open Plan Kitchen / Reception
- Chain Free
- Long Lease
- Excellent Condition
- Approximately 907 sq. ft

Kentish Town Road, London, NW1



Total area (approx.): 84.3 sq. m (907.4 sq. ft)
Balcony: 23.9 sq. m (257.2 sq. ft)