



Properly<sup>✓</sup>

Properly<sup>✓</sup>

Beltran Road, Fulham

London, SW6

£1,750,000



## Beltran Road, Fulham

London, SW6

This wonderful period house features a generously spacious, open-plan entertaining area. The kitchen-dining room seamlessly connects to a south facing garden through bi-folding doors. A spacious reception room with feature fireplace. With three bedrooms, two bathrooms, a utility room and a well-maintained interior. The house is bathed in natural light, creating a warm and inviting atmosphere.

Beltran Road, a sought-after residential street, offers the convenience of nearby South Park's expansive green spaces and its array of facilities, including tennis courts, football and cricket pitches. The Parsons Green underground station (District Line) is also within easy reach.

The property is ideally located between the amenities of Wandsworth Bridge Road. There are also several highly desirable schools nearby, notably the École Française Charles de Gaulle on Clancarty Road and Thomas's Fulham on Hugon Road.

Council Tax band: G

Tenure: Freehold

- Kitchen Dining Room Leading to a South Facing Garden
- Open Plan Entertaining Space
- Three Bedrooms
- Two bathrooms & Separate W.C.







## 3 Beltran Road

London, London

This wonderful period house features a generously spacious, open-plan entertaining area. The kitchen-dining room seamlessly connects to a south facing garden through bi-folding doors. A spacious reception room with feature fireplace. With three bedrooms, two bathrooms, a utility room and a well-maintained interior. The house is bathed in natural light, creating a warm and inviting atmosphere.

Beltran Road, a sought-after residential street, offers the convenience of nearby South Park's expansive green spaces and its array of facilities, including tennis courts, football and cricket pitches. The Parsons Green underground station (District Line) is also within easy reach.

The property is ideally located between the amenities of Wandsworth Bridge Road. There are also several highly desirable schools nearby, notably the École Française Charles de Gaulle on Clancarty Road and Thomas's Fulham on Hugon Road.

Council Tax band: G

Tenure: Freehold

- Kitchen Dining Room Leading to a South Facing Garden
- Open Plan Entertaining Space
- Three Bedrooms
- Two bathrooms & Separate W.C.







## Beltran Road, Fulham

London, SW6

This wonderful period house boasts a spacious open plan entertaining area. The kitchen-dining room seamlessly connects to a south facing garden through bi-folding doors.

With three bedrooms, three bathrooms, and a well-maintained interior, the house is bathed in natural light, creating a warm and inviting atmosphere.

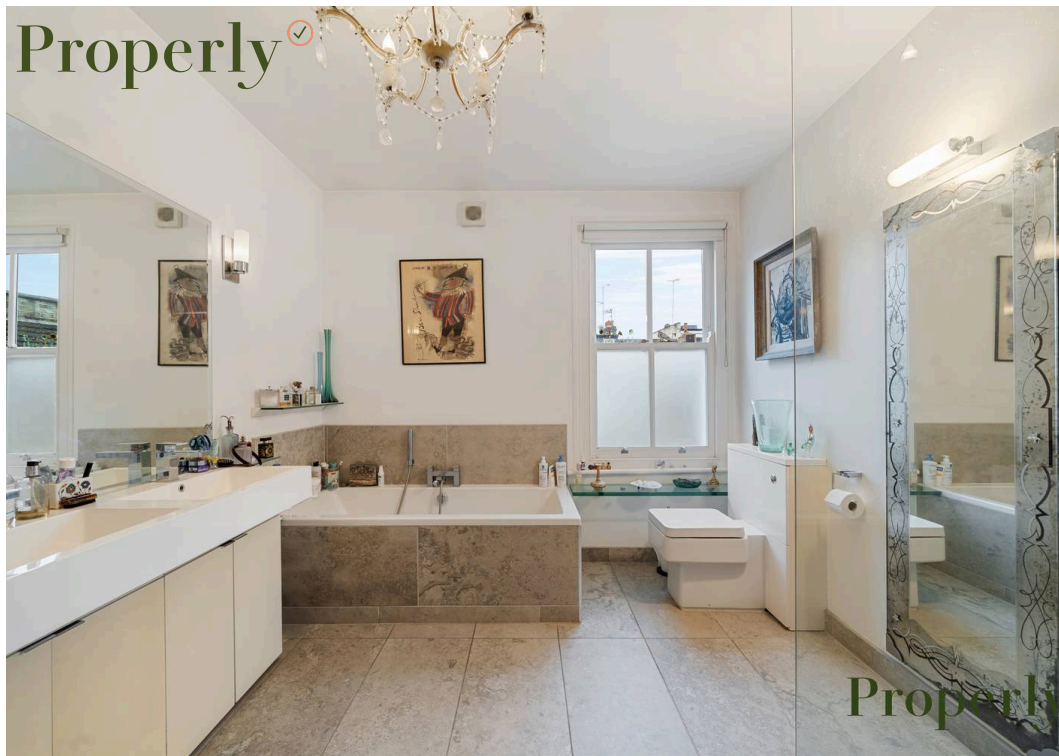
Council Tax band: G

Tenure: Freehold

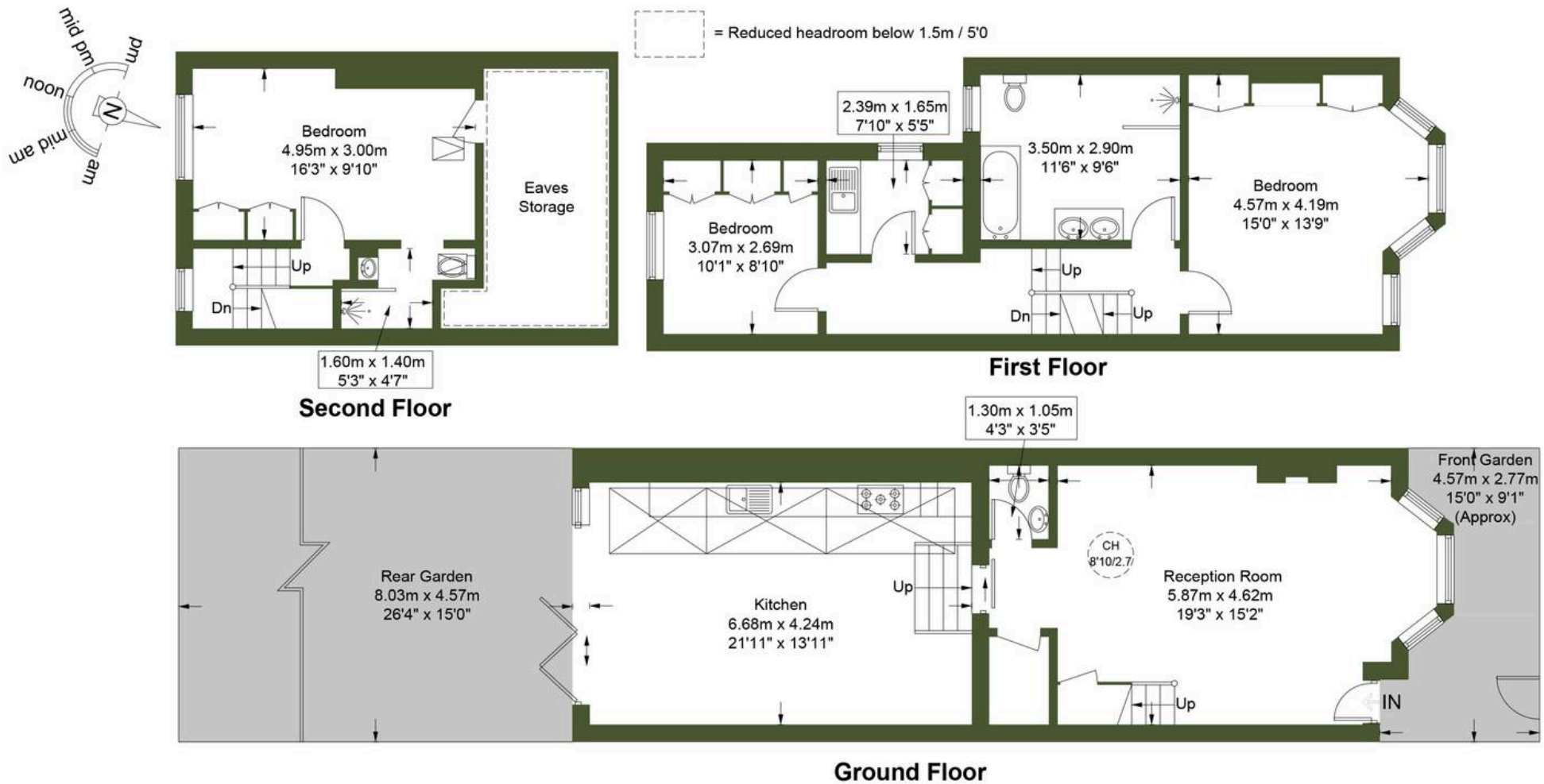
- Kitchen Dining Room Leading to a South Facing Garden
- Open Plan Entertaining Space
- Three bathrooms
- Utility Room
- Three Bedrooms















Properly

0207 459 4400

hello@properly.space