



Properly[✓]

13 Jephson Court Stoneleigh Road, Blackdown

Guide Price £800,000



13 Jephson Court Stoneleigh Road

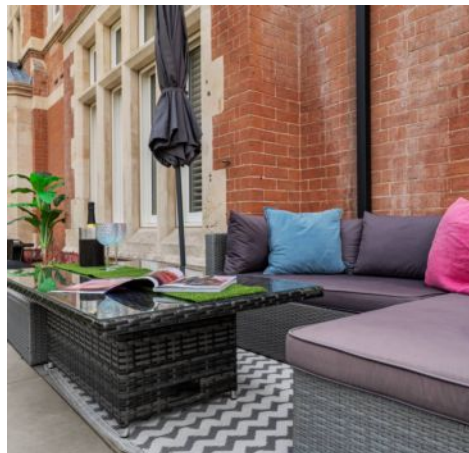
Blackdown, Leamington Spa

A stunning Spitfire Homes conversion of a Victorian mansion house, a 1400 sq ft garden apartment in a gated development set within 7.5 acres of mature landscaped gardens and grounds.

Council Tax band: TBD

Tenure: Leasehold

- Stunning Spitfire Homes conversion of a Victorian mansion house
- Set in 7.5 acres of mature landscaped gardens & grounds
- Gated development with two allocated parked spaces & EV charging
- Period features including high ceilings, plaster mouldings & panelling
- Spectacular full height double glazed sash windows with shutters
- Engineered Oak flooring & feature radiators
- Well equipped kitchen with Neff appliances & Quartz worktops
- Villeroy & Boch sanitaryware & Porcellanosa tiling
- 70 sq m private West facing terrace overlooking the grounds
- 9 years NHBC warranty & 997 year lease remaining









Properly[✓]

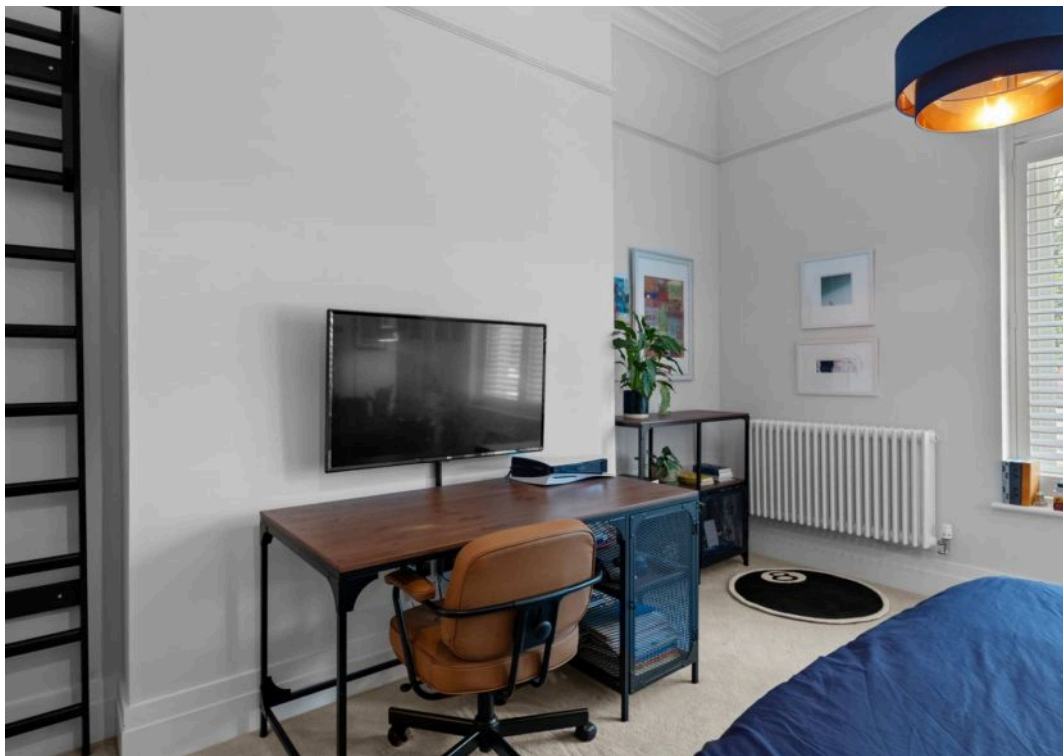
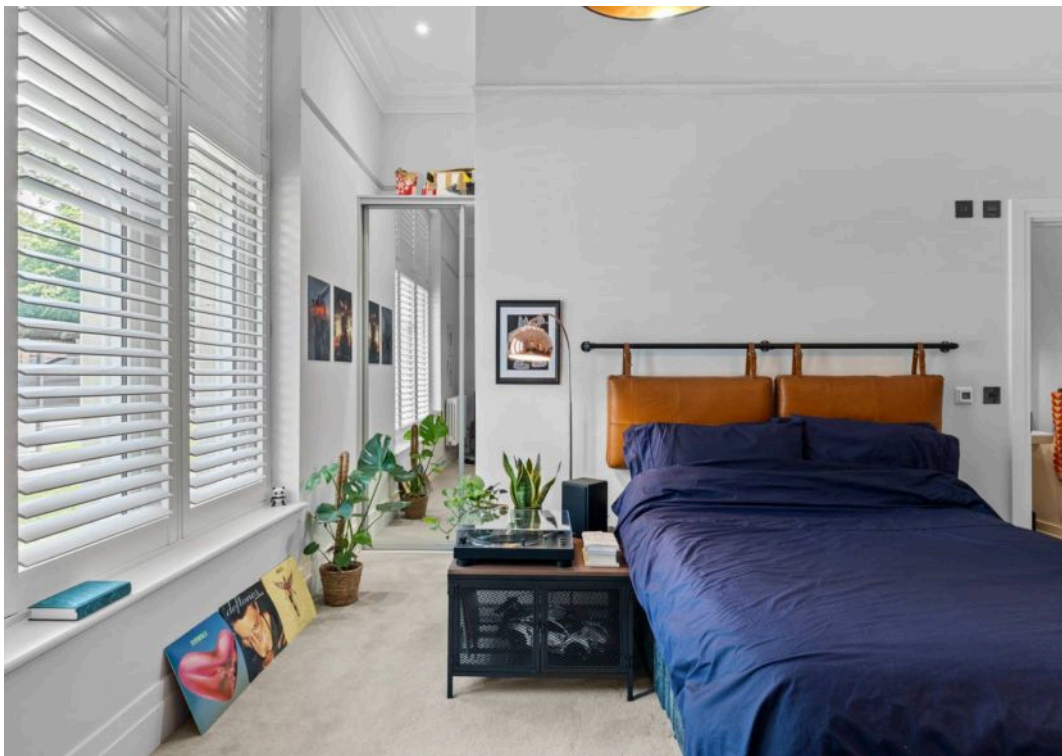


Properly





Properly





Properly

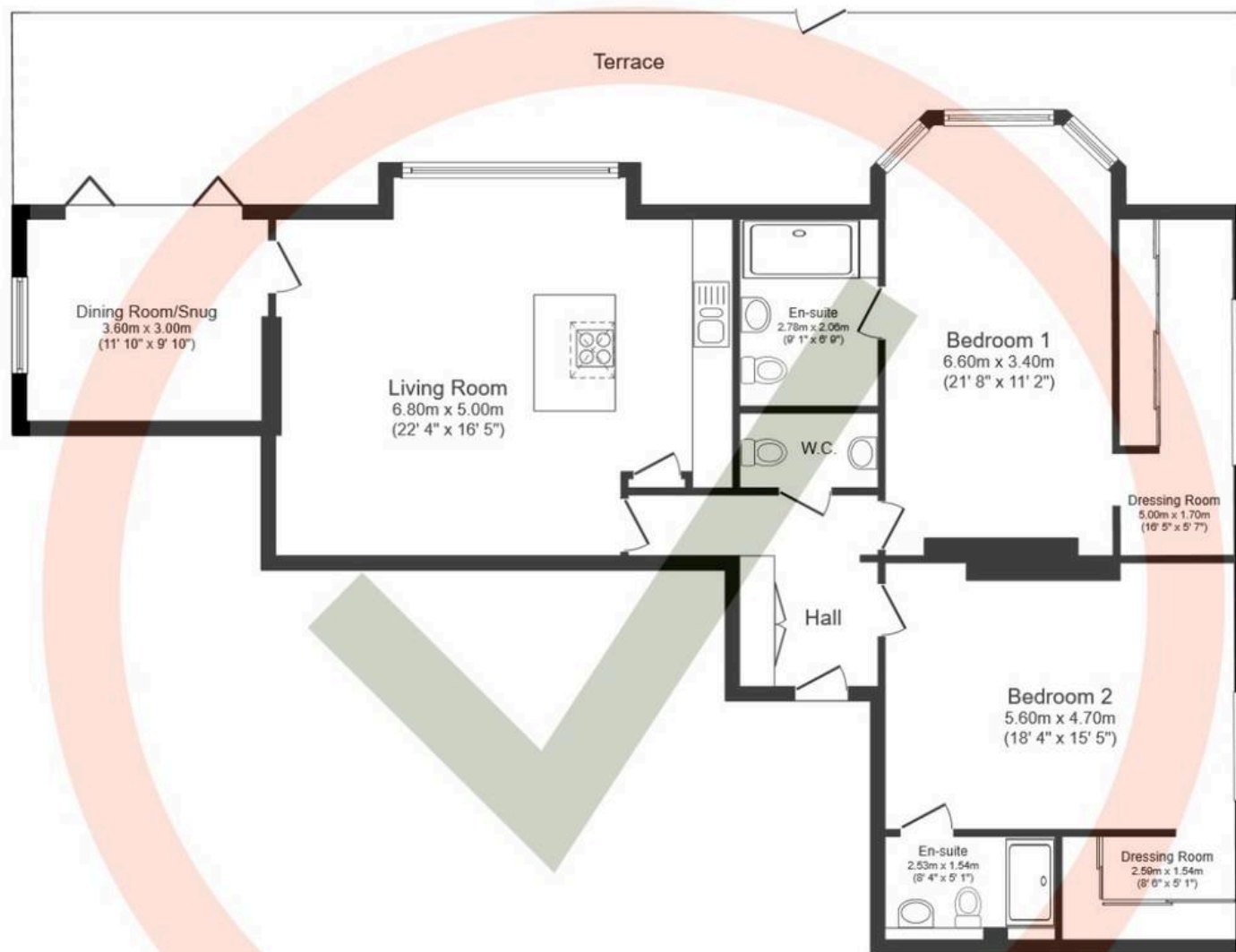
1 Mill Street, Leamington Spa - CV31 1ES

01926 754144

sara.maxwell@properly.space

www.properly.space/

Properly[✓]



Floor Plan

Floor area 122.6 sq.m. (1,320 sq.ft.)

Total floor area: 122.6 sq.m. (1,320 sq.ft.)

This floor plan is for illustrative purposes only. It is not drawn to scale. Any measurements, floor areas (including any total floor area), openings and orientations are approximate. No details are guaranteed, they cannot be relied upon for any purpose and do not form any part of any agreement. No liability is taken for any error, omission or misstatement. A party must rely upon its own inspection(s). Powered by www.Propertybox.io

Properly[®]