



Flat 33, Vandon Court, 64 Petty France, SW1H

£345,000

London



Vandon Court, Petty France,
London, SW1H

This well-presented studio apartment is on the second floor of a popular 1930s mansion block and offers 357 sq ft of living space. It features storage, a modern separate kitchen, and a bathroom accessed via the hallway. The property has a long lease of 985 years and includes a resident porter.

Residents of Vandon Court have a lift and an on-site porter for added convenience. Petty France is a highly desirable residential street in the heart of Westminster. The location is ideal, with Vandon Court leading off to Westminster Chapel in Buckingham Gate in one direction and St James's Park Underground station just a few minutes walk in the other direction, ensuring easy access to the city.

Council Tax band: C

Tenure: Leasehold

- Includes heating & hot water
- Resident Porter
- Lift
- Prime location
- Entry phone
- Zone 1
- St James underground 0.1m



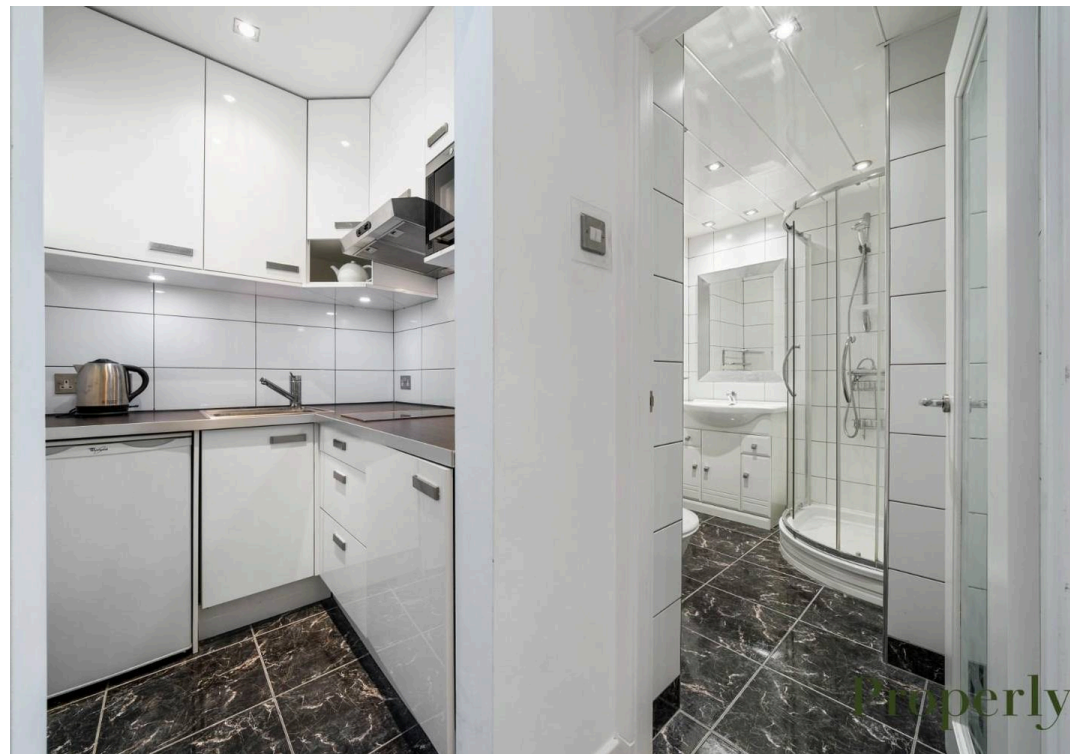
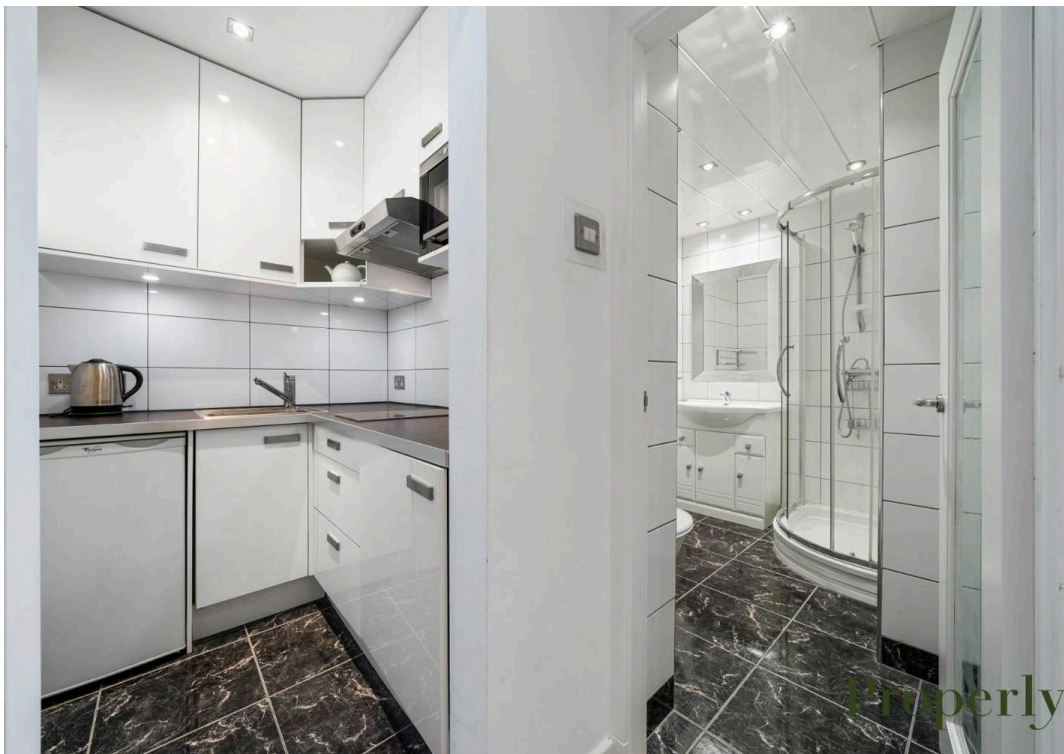


Vandon Court, Petty France,
London, SW1H

Residents are spoilt for choice, with the best of Westminster and Victoria on the doorstep. Endless eateries, theatres, and London landmarks like Westminster Cathedral and Buckingham Palace are a mere stone's throw from the front door. Plus, the vast green expanse of St James Park is nearby.

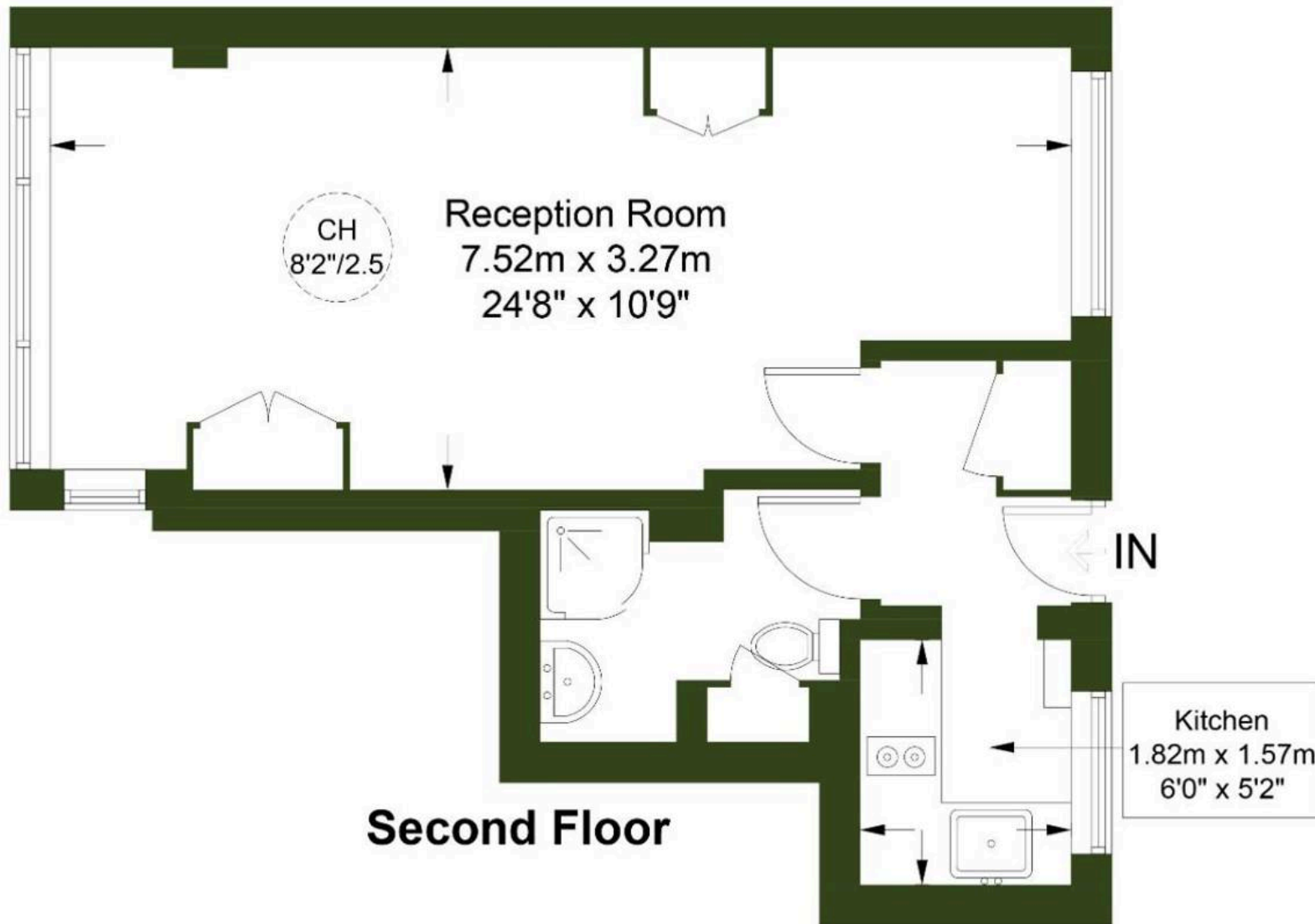
- Includes heating & hot water
- Resident Porter
- Lift
- Prime location
- Entry phone
- Zone 1
- St James underground 0.1m





Vandon Court, SW1H

Approximate Gross Internal Area = 357 sq ft / 33.2 sq m





Properly

46-48 East Smithfield - E1W 1AW

0207 459 4400 • hello@properly.space • www.properly.space/