



Properly

Properly

138-140 Shirland Road, Maida Vale, London, W9

In Excess of £600,000



Shirland Road, Maida Vale, London, W9

Discover this charming two-bedroom garden flat, beautifully set within a lower-ground period conversion.

Spanning 693 sq ft, this home features two bathrooms and a delightful private garden, perfect for outdoor relaxation. The open-plan reception area seamlessly connects to a contemporary kitchen, creating an inviting space for entertaining.

This property is on Shirland Road and offers convenient access to various shops, cafes, and restaurants. It's also ideally located near Maida Vale and Westbourne Park underground stations, making commuting a breeze.

Enjoy the nearby lush green spaces of Paddington Recreation Ground and the unique independent shops and cafes lining Elgin Avenue. With a long lease included, this modern two-bedroom apartment is a beautiful opportunity for comfortable living in a vibrant neighbourhood.





Flat A

138-140 Shirland Road, London

With a long lease & share of the freehold included, this modern two-bedroom apartment is a beautiful opportunity for comfortable living in a vibrant neighbourhood.

Tenure: Share of Freehold

Term 999 years

Time remaining

981 years

End date

25/12/3006

Service charge for the period 25 June 24 to 24 Dec 24 is £ 723.77

Reserve fund for period 25 June 24 to 24 Dec 24 £ 454.55

No Ground Rent





Shirland Road, Maida Vale, London, W9

Council Tax band: TBD

Tenure: Leasehold

- Share of Freehold
- Private Garden
- Long Lease
- Two Bedrooms
- Two Bathrooms
- Own Private Entrance
- Open Plan Kitchen & Reception Area



Properly 



Properly

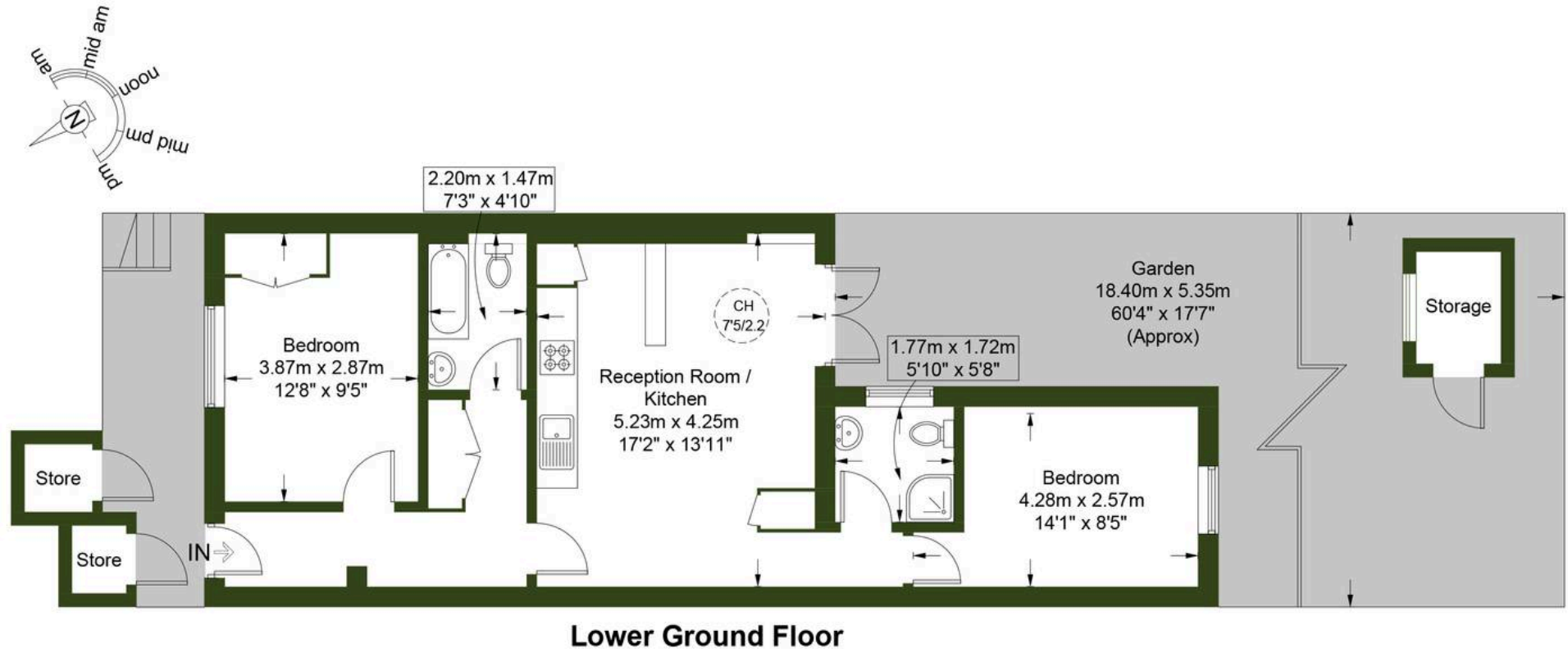


Properly



Properly

Outbuildings = 42 sq ft / 3.9 sq m





Properly

13 Palace Street, London, SW1E 5HX

0207 459 4400 • hello@properly.space • www.properly.space/