



Bridge Street

Saffron Walden, CB10

£500,000



Bridge Street

Saffron Walden, CB10

Presenting a rare opportunity to own a piece of history is this exquisite 16th-century Grade II listed property. Once part of a former Coaching Inn during the Tudor period, and later two separate dwellings, it has been transformed into a 4-bedroom terraced house exuding character and charm. This distinguished abode boasts original features at every turn, creating an enchanting ambience throughout.

The house has been maintained in keeping with its heritage and boasts an impressive original Inglenook fireplace and surround that serves as a focal point in the living room. Also featuring original sash windows, exposed timbers and beams throughout and a courtyard-style garden. There is an outbuilding and side access with power and light. The layout is flexible with two accesses from the street, interconnecting door between the receptions and three accesses to the rear. Offered chain-free.

Council Tax band: C

Tenure: Freehold



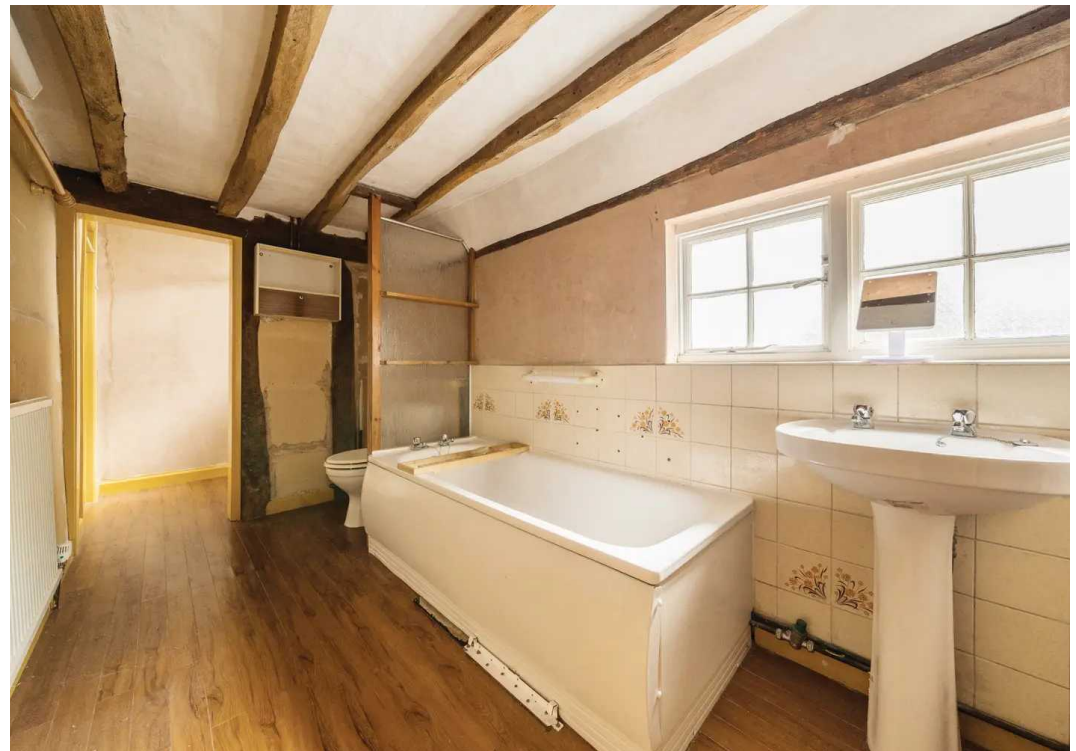


Bridge Street

Saffron Walden, CB10

- Tudor, former Coaching Inn
- 16th Century Grade II Listed
- Original features in abundance
- Exposed timbers and beams throughout
- Original Inglenook fireplace and surround
- Original sash windows
- Courtyard style garden
- Side access
- Outbuilding
- Chain free







Approximate Area = 1675 sq ft / 155.6 sq m

Limited Use Area(s) = 85 sq ft / 7.9 sq m

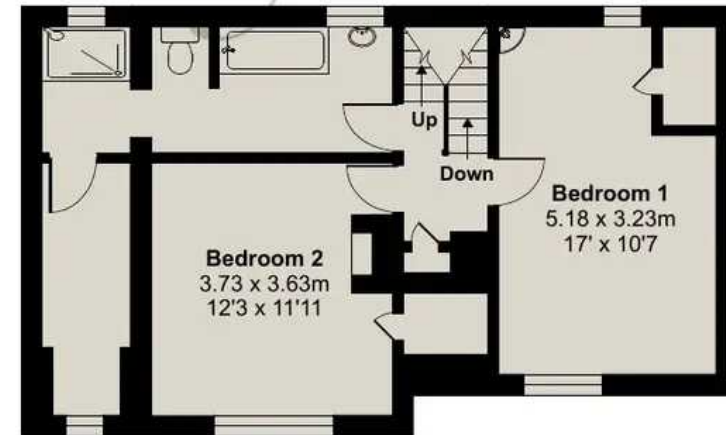
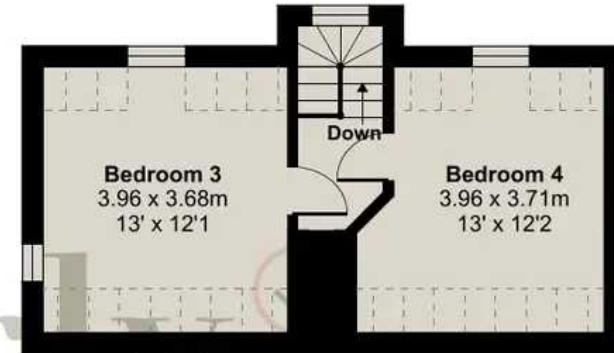
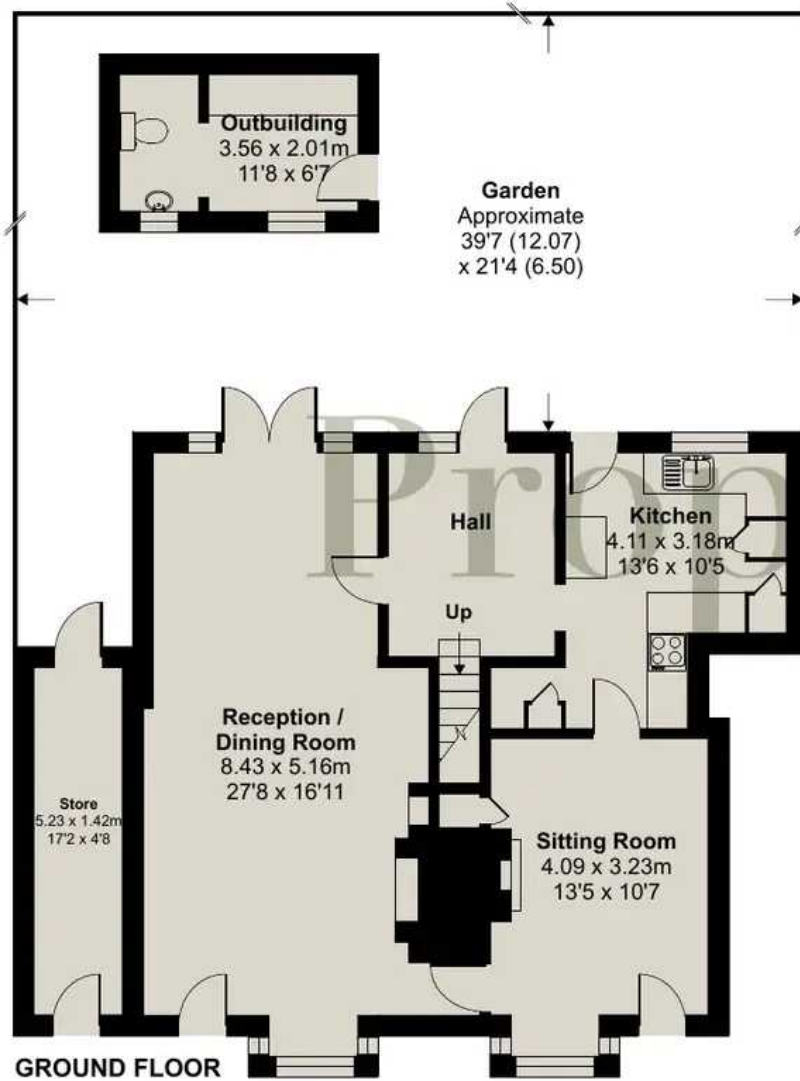
Outbuilding(s) = 150 sq ft / 13.9 sq m

Total = 1910 sq ft / 177.4 sq m

For identification only - Not to scale



Denotes restricted head height



Properly[✓]



Properly

Properly Estate Agents, 13 Palace Street, London - SW1E 5HX

07973 793670 • lee.wheatley@properly.space • www.properly.space/