



49 Wellington Street, London, WC2

£2,750 pcm



49 Wellington Street, London

Step into this fully furnished, top-floor apartment, a generously spacious 654 sq ft one-bedroom apartment in the heart of Wellington Street, WC2E.

This apartment stands out with its wood flooring, integrated kitchen appliances, a spacious bedroom with a walk-in wardrobe, and an en suite bathroom.

The separate WC in the hallway and the lift to the apartment add to its convenience. This top-floor apartment enjoys a serene environment with plenty of natural light.

Its proximity to the Covent Garden underground station adds to its appeal. It is available for immediate occupancy and ready for you to move in.

- Top Floor
- Lift Access
- Furnished
- One bedroom Apartment
- Period Building
- Covent Garden Underground (0.1 miles away)
- En-suite bathroom & a separate W.C.
- Great Location



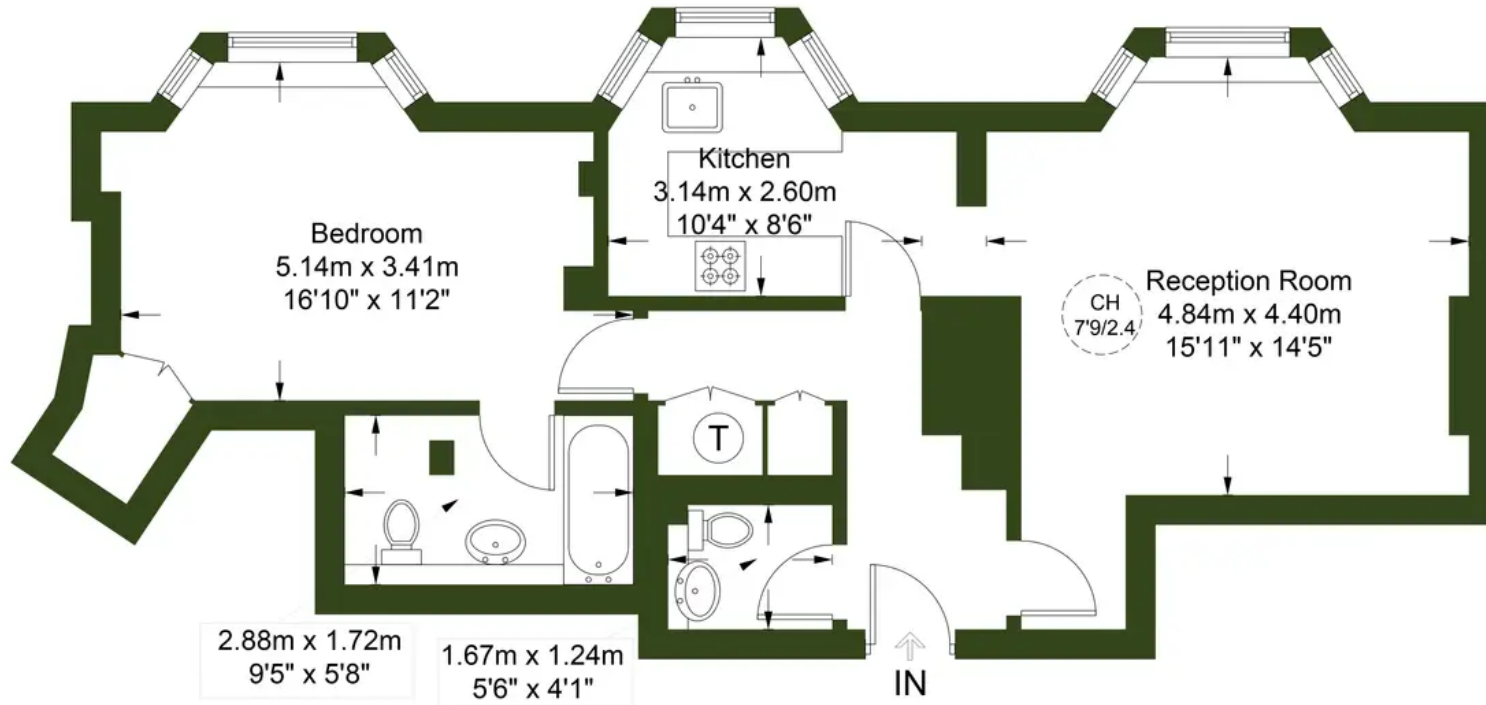
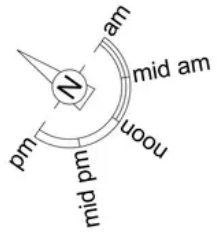


Wellington Street, London, WC2

- Top Floor
- Lift Access
- Furnished
- One bedroom Apartment
- Period Building
- Covent Garden Underground (0.1 miles away)







Third Floor



Properly 



Properly

0207 459 4400 • hello@properly.space • www.properly.space/