

Properly 



22, Queen's Gate Mews, London, SW7

London

£5,400,000

Properly

Properly



A beautiful five-bedroom, five-bathroom mews house, set over three floors with a private garage and access to a private courtyard.

Located in a serene cobbled mews, a stone's throw away from the expansive Hyde Park and Kensington Gardens, this exquisite mews home offers a unique blend of London convenience and tranquillity. Mews houses, renowned for their privacy and exclusivity, provide a peaceful retreat in the heart of South Kensington. This freehold five-bedroom house in Queens Gate Mews is a testament to luxury living in one of South Kensington's most prestigious areas.

A substantial four/five bedroom mews style property, spanning over 2700 sq ft and flowing across three floors with a garage and outdoor courtyard. It is in a prime residential area in the Royal Borough of Kensington and Chelsea.

Nestled at the end of a cobbled mews, this luxurious mews house is a haven of comfort and style. Crafted with meticulous attention to detail, it offers expansive rooms, four/five en-suite double bedrooms, and a versatile entertaining space. The coveted outdoor area includes a paved courtyard and a generous internal garage, ensuring comfort and convenience.

Convenience is a key feature of this property, with Gloucester Road, South Kensington, and Kensington High Street tube stations just a short distance away. The tranquillity of the open green spaces of Kensington Palace Gardens and Hyde Park is within easy reach, offering a perfect balance between city living and natural beauty.

Council Tax band: G

Tenure: Freehold



22, Queen's Gate Mews, SW7

Council Tax band: G

Tenure: Freehold

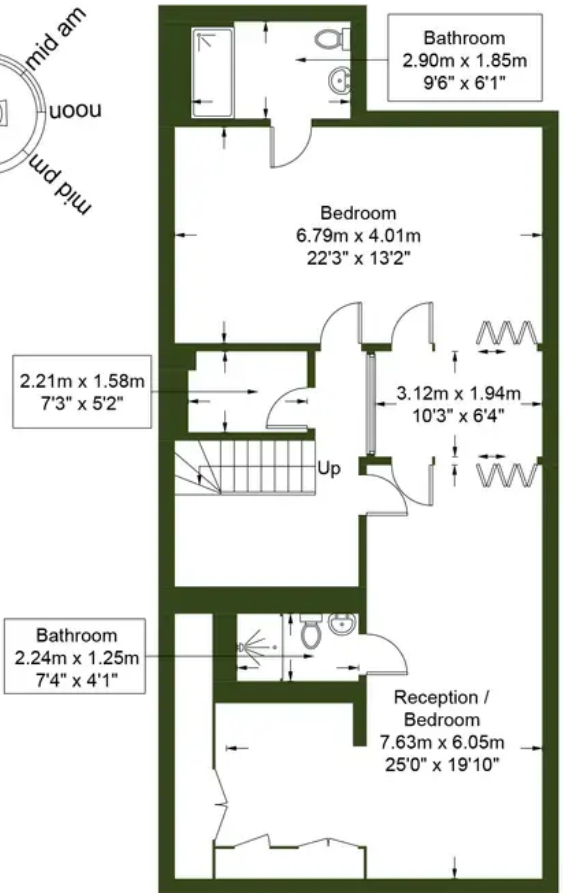
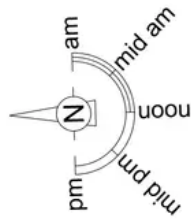
- Stunning Mews over Three Floors
- Garage
- Courtyard
- Five Double Bedrooms
- Five Bathrooms
- Kitchen/Dining Area
- Pretty cobbled mews



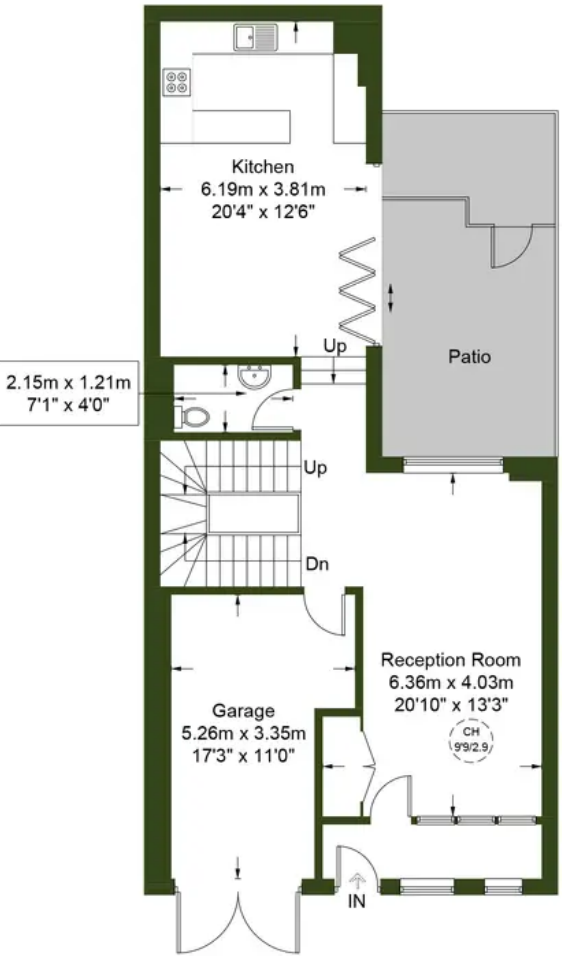
Queens Gate Mews, SW7

Approximate Gross Internal Area = 2758 sq ft / 256.2 sq m

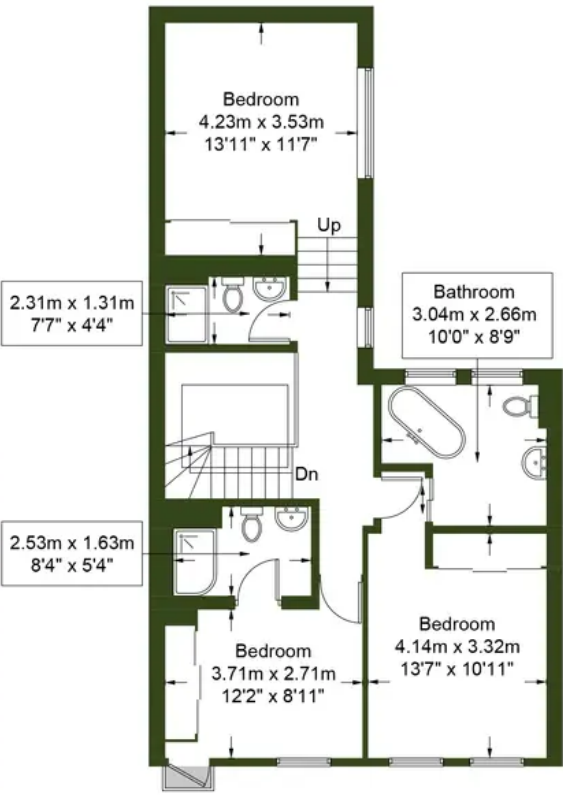
Garage = 170 sq ft / 15.8 sq m



Basement



Ground Floor




First Floor



Properly 



Properly 

Properly

Properly Estate Agents, 13 Palace Street, London - SW1E 5HX

0207 459 4400 • hello@properly.space • www.properly.space/

