

ANWYL
thoughtful homes

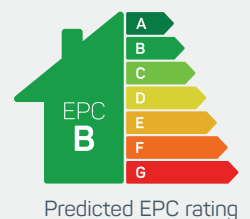


the evesham

4 bed detached

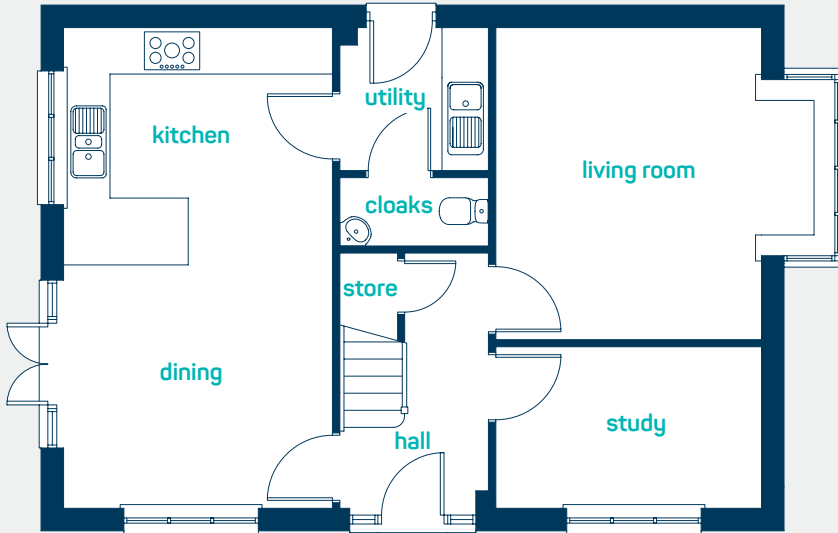
A *traditional* double fronted 4 bedroom home filled with modern interiors. Stunning open-plan kitchen diner with utility room, light and bright living room and handy separate study. 4 spacious bedrooms with an en-suite to the master bedroom.

www.anwylhomes.co.uk





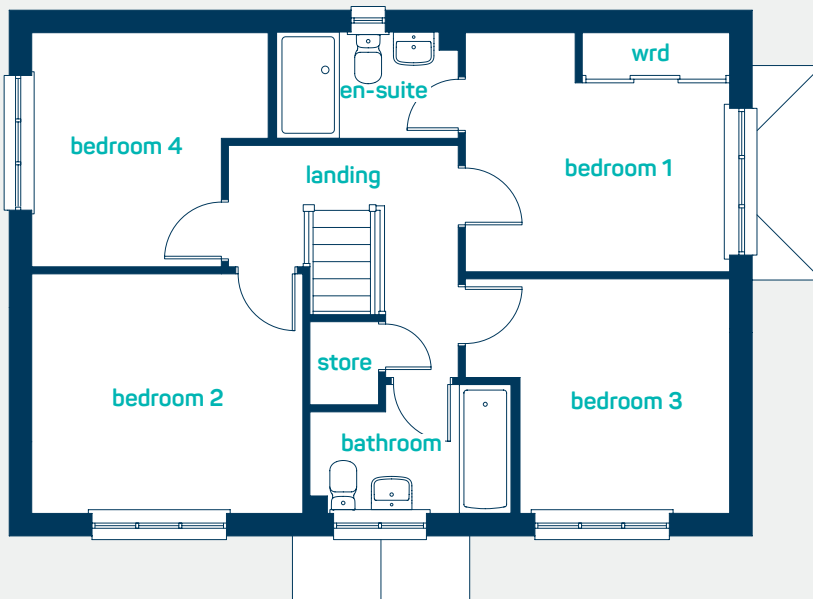
providing space for the whole family



ground floor

kitchen-dining	21'1" x 11'9"
utility room	6'5" x 6'3"
living room (into bay)	14'2" x 13'9"
study	11'7" x 7'1"
cloaks	6'5" x 3'0"

kitchen-dining	6.42m x 3.57m
utility room	1.95m x 1.90m
living room (into bay)	4.31m x 4.18m
study	3.53m x 2.15m
cloaks	1.95m x 0.92m



first floor

bedroom 1	11'7" x 10'6"
en-suite	8'0" x 4'7"
bedroom 2	11'11" x 10'6"
bedroom 3	11'7" x 10'3"
bedroom 4	10'4" x 10'3"
bathroom	8'11" x 5'7"

bedroom 1	3.53m x 3.19m
en-suite	2.44m x 1.40m
bedroom 2	3.63m x 3.21m
bedroom 3	3.53m x 3.13m
bedroom 4	3.16m x 3.13m
bathroom	2.71m x 1.71m

the evesham
4 bed detached

ANWYL
thoughtful homes

NEW HOMES QUALITY CODE

NEW HOMES OMBUDSMAN SERVICE

www.anwylhomes.co.uk

Anwyl Homes is a Registered Developer with the NHQB. This is a computer-generated image of the evesham, elevation treatment may vary. Room sizes are approximate, dimensions are taken from the longest room point (please consult homes advisor for measurement points). Plots may be handed and any garages may be single or double. Kitchen and bathroom layouts are indicative. These plans are correct at the time of going to press, but may be subject to change during construction. Please ensure that you check for specific plot details. 01/11/22.

everything considered.