



MARCO HARRIS
THE PROPERTY PROFESSIONALS

Hobart Drive, Hythe, Southampton, SO45

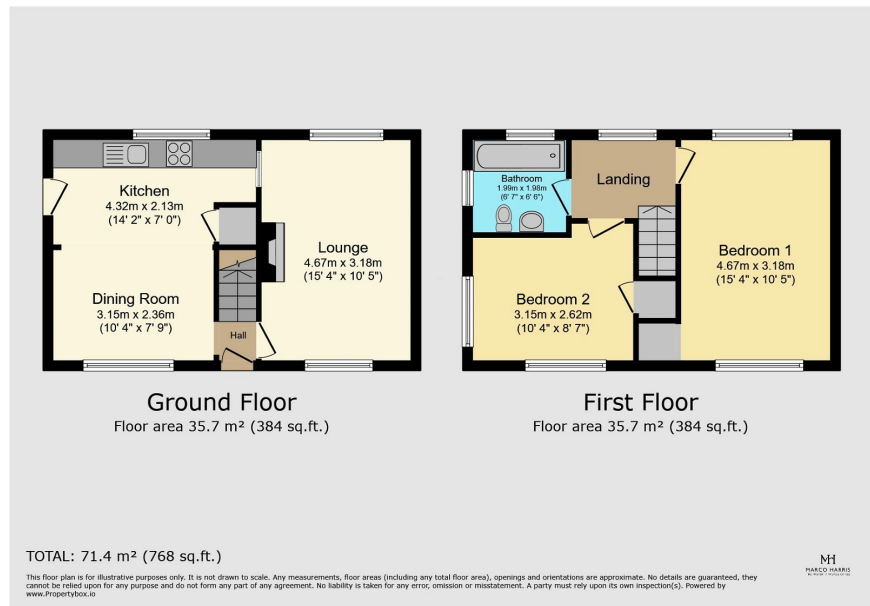
Guide Price £290,000

2 1 0



- Semi- Detached Home
- Ideal For A Motor Home Or Works Van
- Open Plan Kitchen/ Diner
- New Sash Double Glazing
- First Floor Family Bathroom
- Secure, Gated Parking To Rear
- Two Double Bedrooms
- Additional Workshop Space To Side
- No Forward Chain*
- Call To View





Welcome To Hobart Drive! Do you own a motor home, or a works van, looking for hidden away, secure parking? Have a look at this house! Set in a beautiful plot, this fantastic home offers some fantastic space inside and out. Downstairs this semi- detached house offers a kitchen diner and separate lounge. Upstairs are two well-proportioned bedrooms. The garden is larger than average and there is the added benefit of secure gated parking to the rear! The property has been through a generous refurbishment programme to include; sash double glazing, re-plastering and decoration. Yet there is still some odd jobs that the new owner may enjoy doing.

81

63