

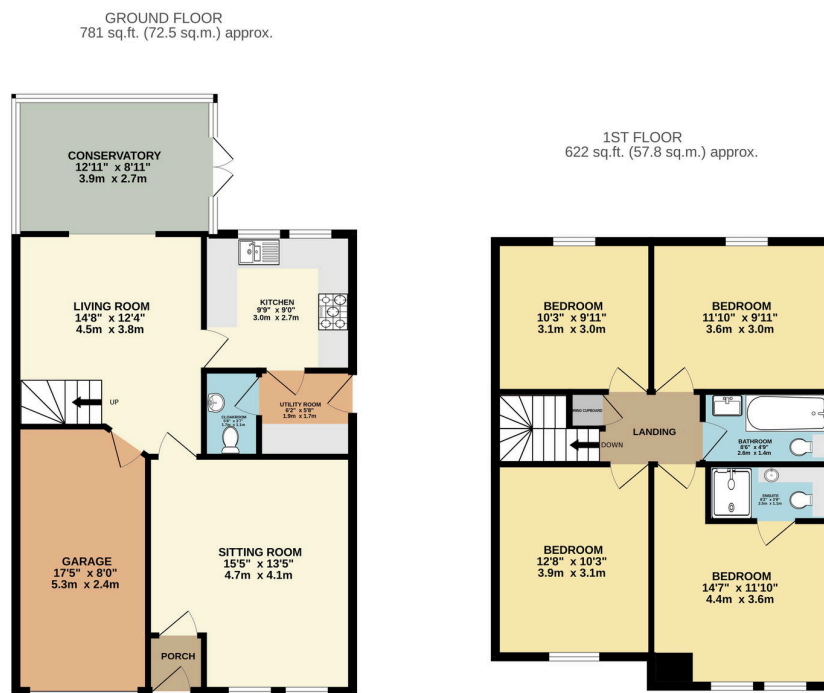
Hickory Gardens, West End, Southampton, SO30

Offers Over £535,000

🛏 4 🚿 2 🚗 2



- Exquisitely Presented Detached Family Home
- Tucked Away In A Quiet Cul De Sac
- Modern Fitted Kitchen With A Range Of Integrated Appliances
- Three Toilet Facilities Which Includes A Bathroom, En-Suite & Downstairs Toilet
- Walking Distance To West End Village, Easy Access To Hedge End Retail Park
- Four Well Proportioned Double Bedrooms
- Cherished By The Current Owners For Over 20 Years
- Off Road Parking For Three Vehicles
- Low Maintenance South/West Facing Rear Garden With Side Gated Access
- Situated Within Multiple Primary & Secondary School Catchments



TOTAL FLOOR AREA: 1403 sq.ft. (130.3 sq.m.) approx.

Whilst every attempt has been made to ensure the accuracy of the floorplan contained here, measurements of doors, windows, rooms and any other items are approximate and no responsibility is taken for any error, omission or mis-statement. This plan is for illustrative purposes only and should be used as such by any prospective purchaser. The services, systems and appliances shown have not been tested and no guarantee as to their operability or efficiency can be given.
Made with Metropix 55025

Tucked away in a quiet cul-de-sac, this generously proportioned four-bedroom detached home offers the perfect blend of space, style, and comfort for growing families. With driveway parking for multiple vehicles and an integral garage, practicality meets convenience from the moment you arrive. Lovingly maintained by its current owners for over 20 years, this warm and welcoming home is ready to create new memories.