




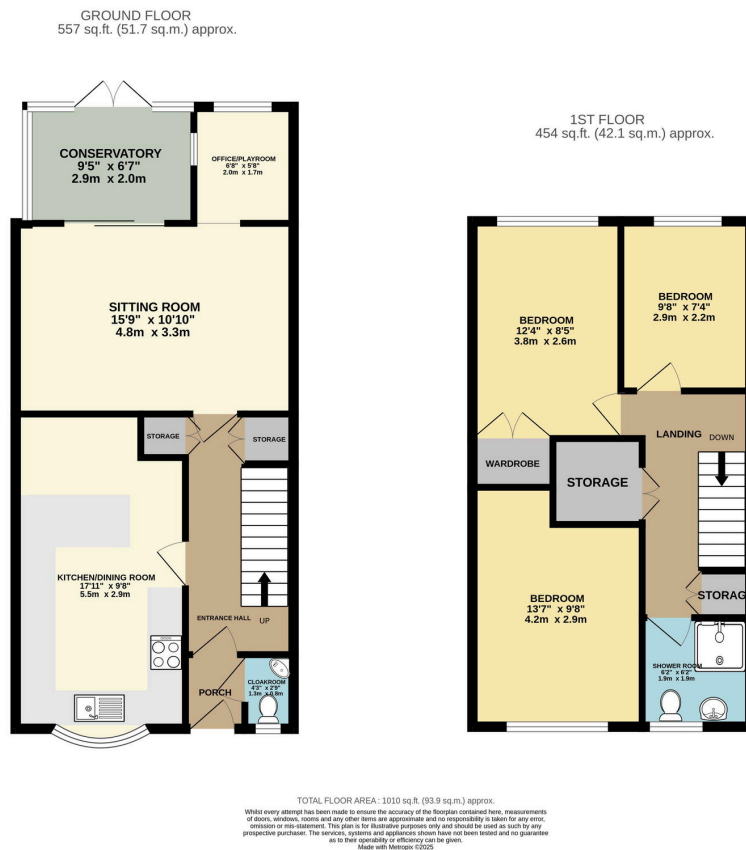
## St. Michaels Road, Locks Heath, Southampton, SO31

Guide Price £325,000

 3 
  1 
  2



- Perfect Opportunity For A First Time Buyer Or A Growing Family
- Tucked Away In A Quiet Cul De Sac
- Three Well Proportioned Bedrooms
- Low Maintenance South/Westerly Facing Garden With Rear Gated Access
- Close Proximity To Locks Heath & Whiteley Shopping Centre
- Owned By The Current Owners Since Newly Built In 1983
- Spacious Semi-Detached Family Home
- Open Plan Kitchen Dining Room With Potential To Modernise
- Downstairs Toilet & Upstairs Shower Room
- Ample Residential Parking



Tucked away in a peaceful cul-de-sac, this spacious three-bedroom semi-detached home presents a rare opportunity to step into a property that's been lovingly maintained by its original owners since it was built in 1983. Now ready for its next chapter, this much-loved family home is perfect for those seeking comfort, space, and the potential to personalise.