

21 Crows Nest Lane, Botley

Guide Price £1,200,000

5 4 3

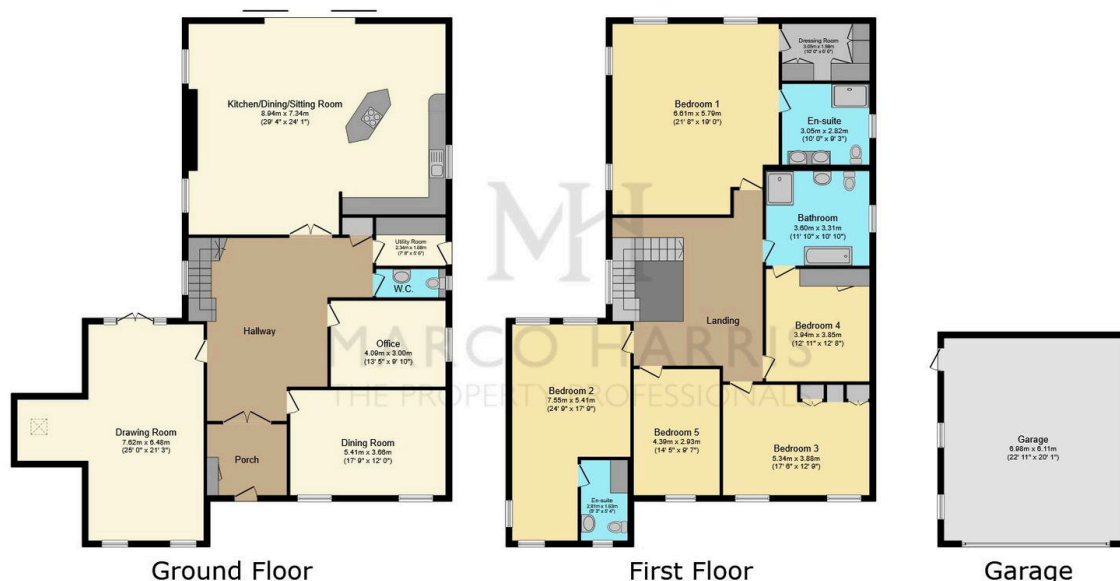




MARCO HARRIS

THE PROPERTY PROFESSIONALS

- Substantial Detached Family Home Hidden Behind Electric Gates Spanning Over 3,900 Sq.ft.
- Grand Entrance Hallway With Handmade Wooden Staircase
- Full Range Of High Quality Neff Integrated Appliances Within The Kitchen
- Double Width Wooden Garage Measuring 22'11 x 20'1"
- Close Proximity To Both Hedge End & Botley Village
- Five Well Proportioned Double Bedrooms
- Extensive Ground Floor Accommodation Including The Open Plan Kitchen Living Room & Three Extra Reception Rooms
- Ample Off Road Parking For A Minimum Of Five Vehicles
- Three Bathroom Facilities That Include Two En-Suites & A Jack & Jill Bathroom
- Easy Access To Transport Links Including Motorway, Train Stations & Bus Stops



This floor plan is for illustrative purposes only. It is not drawn to scale. Any measurements, floor areas (including any total floor area), openings and orientations are approximate. No details are guaranteed, they cannot be relied upon for any purpose and do not form any part of any agreement. No liability is taken for any error, omission or misstatement. A party must rely upon its own inspection(s). Powered by www.Propertybox.io



Set behind electric wooden gates, this impressive detached five-bedroom home offers over 3,900 square feet of living space. Owned by the same family for more than 20 years, it has been thoughtfully modernised and extended over time. Key highlights include a grand entrance hall featuring a handcrafted wooden staircase and an expansive open-plan kitchen and living area, with double sliding doors stretching across the width of the room, perfectly framing the beautifully landscaped garden.