

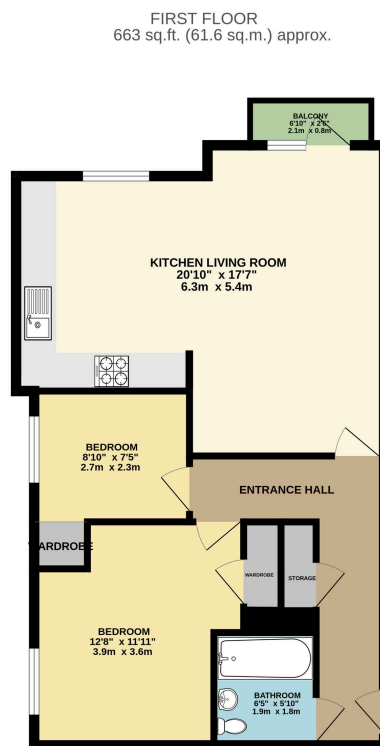
## Blyth Gardens, Hedge End, Southampton, SO30

Guide Price £225,000

2 1 1



- Built In 2019 By Foreman Homes
- Two Well Proportioned Bedrooms
- Two Allocated Parking Spaces With One Under A Sheltered Car Port
- Spacious Open Plan Kitchen Living Room
- Owned By The Current Owners Since Newly Built
- Situated On The First Floor
- Perfect First Time Buyer Starter Home Or An Ideal Investment Opportunity
- Lift Within The Building
- Southerly Facing Balcony & Windows To The Main Kitchen Living Room
- Close Proximity To M27 & Hedge End Village



TOTAL FLOOR AREA: 663 sq ft. (61.6 sq.m.) approx.  
Whilst every attempt has been made to ensure the accuracy of the floorplan contained herein, measurements of doors, windows, rooms and any other items are approximate and no responsibility is taken for any error, omission or mis-statement. This plan is for illustrative purposes only and should be used as such by any prospective purchaser. The services, systems and appliances shown have not been tested and no guarantee as to their operability or efficiency can be given.  
 Made with Memphis 12/2021

Located in the sought-after Blyth Gardens development, this beautifully presented two-bedroom first-floor flat offers a perfect blend of space, style, and convenience. Built in 2019 by the well-regarded Foreman Homes, this home has been lovingly maintained by its current owners who are now looking to upsize locally offering you the chance to secure a fresh start in a vibrant and well-connected community.