

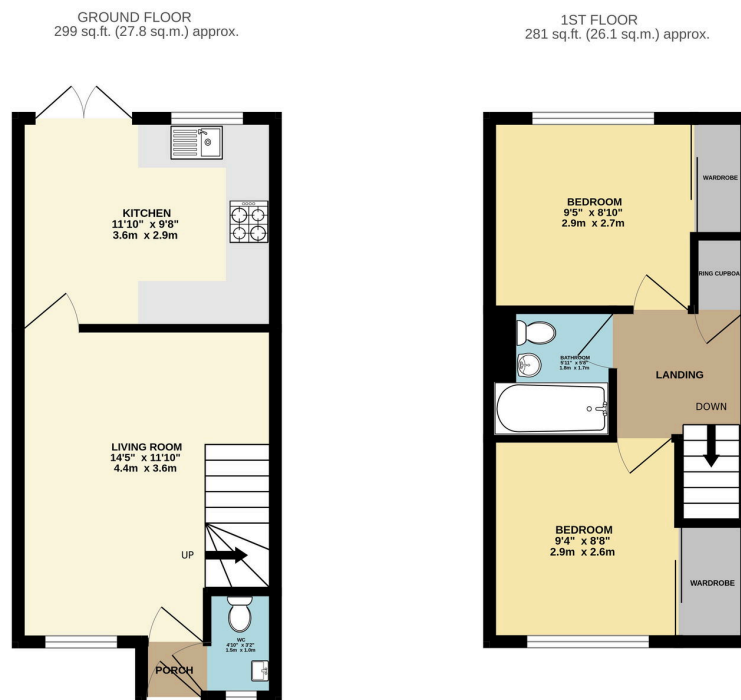
## Britannia Gardens, Hedge End, Southampton, SO30

Offers Over £280,000

🛏 2 🚿 1 🚗 1



- Well Presented Terraced Home
- Ideal For First-Time Buyers, Down Sizers Or Investors Alike
- Tucked Away In A Quiet Cul-De-Sac
- Newly Revamped Kitchen & Bathroom
- Walking Distance To Hedge End Train Station & Bus Stops
- Two Equally Sized Double Bedrooms
- Enjoyed By The Current Owners Since 2020
- Two Allocated Parking Spaces & Visitor Spaces
- Southerly Facing Rear Garden
- Easy Access To Motorway Links & Hedge End Retail Park



TOTAL FLOOR AREA: 580 sq.ft. (53.9 sq.m.) approx.  
 Whilst every attempt has been made to ensure the accuracy of the floorplans contained here, measurements of doors, windows, rooms and any other items are approximate and no responsibility is taken for any error, omission or mis-statement. This plan is for illustrative purposes only and should be used as such by any prospective purchaser. The services, systems and appliances shown have not been tested and no guarantee as to their operability or efficiency can be given.  
 Made with Metropix i2055

Tucked away in a quiet cul-de-sac within the sought-after Britannia Gardens of Grange Park, this beautifully presented two-bedroom terraced home offers a perfect blend of modern upgrades and practical living space ideal for first-time buyers, down sizers, or investors alike.