



MARCO HARRIS  
THE PROPERTY PROFESSIONALS

5 Belmere Drive,  
Guide Price £439,500

3 2 1




## Welcome to Belmere Drive!

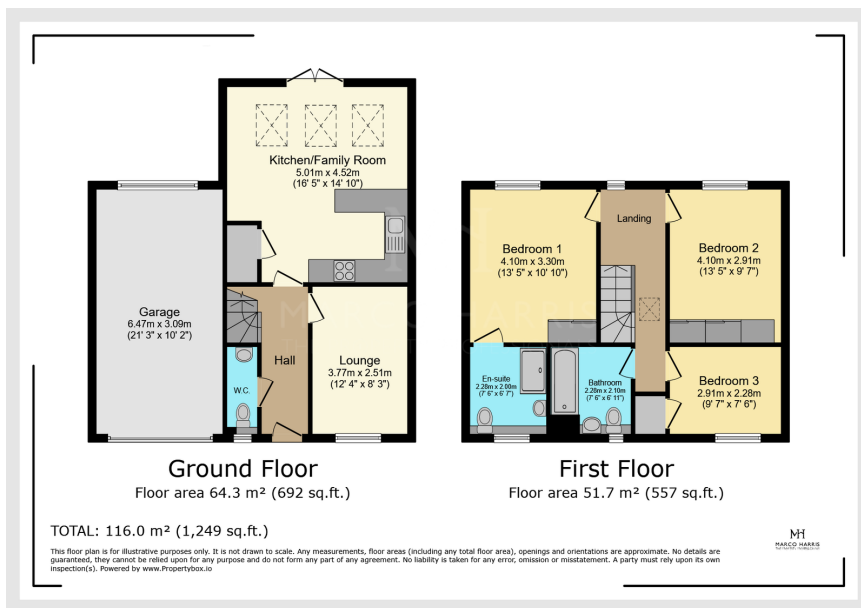
This charming three-bedroom home is nestled in a peaceful cul-de-sac, offering a serene and private setting. The ground floor features a spacious, open-plan kitchen, dining, and family area, ideal for socialising and entertaining. Double doors leading to a west-facing garden, this space is filled with natural light, perfect for indoor outdoor living. The modern kitchen has been upgraded and is equipped with integrated appliances, including a fridge/freezer and dishwasher, for added convenience. A cosy lounge and a stylish WC complete the downstairs layout.

Upstairs, you'll find two generously sized double bedrooms and a comfortable single bedroom. The master suite boasts an en suite bathroom and fitted wardrobes, providing both luxury and ample storage. Outside, the rear garden is fully enclosed and predominantly laid to lawn, with a patio area extending from the kitchen/family room, ideal for outdoor dining and relaxation with added side access. The property also benefits from a carport and driveway, ensuring convenient parking.

Pembers Hill Park offers something for everyone. In one direction you will find Southampton and in the other, Winchester with its impressive cathedral shops, cafes and restaurants. If you prefer to spend your time in the countryside, the South Downs National Park offers breathtaking views, diverse wildlife and plenty of opportunities to get back to nature. Not forgetting the younger residents, nearing several excellent schools. Marwell Zoo, just a few miles away, makes for a wonderful day out and even boasts its own unique kindergarten. Meanwhile, another local highlight is undoubtedly Paultons Park with its popular Peppa Pig World!

 We genuinely look forward to hearing from you soon and assisting you in finding your perfect home. Overall, this beautiful





- Beautifully Presented Detached Family Home
- Open Plan Living/Kitchen/ Dining Area
- Three Generous Sized Bedrooms
- Sizeable Rear Garden With Side Access
- Car Port
- Situated In A Popular New Development
- Ultra Modern Kitchen With Integrated Whitegoods
- Marble Effect En-Suite And Family Bathroom
- Situated Within A Peaceful Cul-De-Sac
- Contact Marco Harris across our social media platforms, website or WhatsApp numbers. Follow us for exclusive updates to help find your dream home! 🏡📱



Score	Energy rating	Current	Potential
92+	A		
81-91	B	85 B	87 B
69-80	C		
55-68	D		
39-54	E		
21-38	F		
1-20	G		

Website: [marcoharris.co.uk](http://marcoharris.co.uk)

Email: [lettings@marcoharris.co.uk](mailto:lettings@marcoharris.co.uk) // [sales@marcoharris.co.uk](mailto:sales@marcoharris.co.uk)

Phone: 02381 733330