




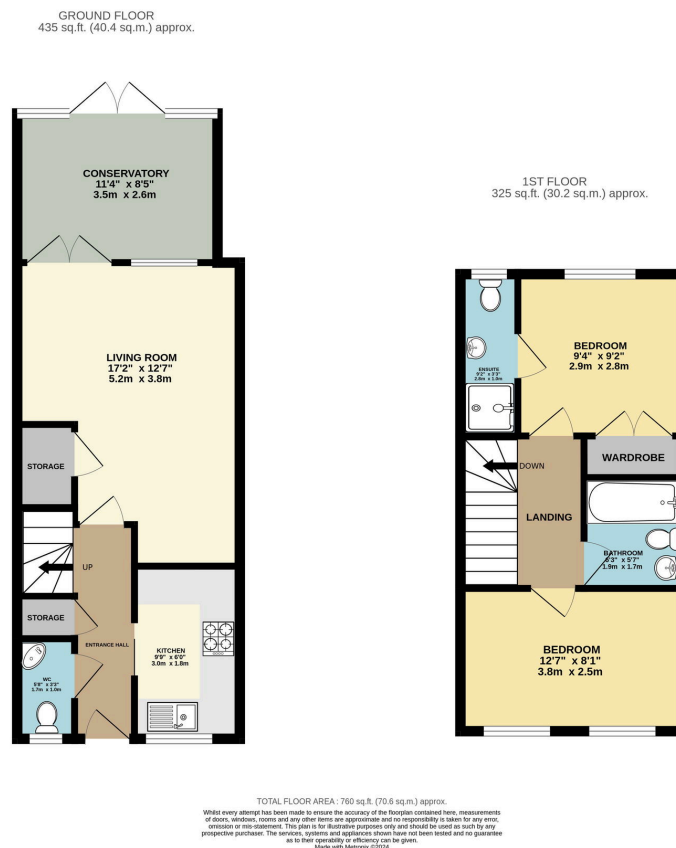
## Hindmarch Crescent, Hedge End, Southampton, SO30

Offers Over £290,000

 2  2  1



- Two Double Bedroom Terraced Home
- Newly Built By Foreman Homes In 2012
- Allocated Parking For Two Vehicles, One Benefitting From Being Sheltered
- Enjoyed By The Current Owners Since 2017
- Modern Fitted Kitchen With Separate Living Room
- Three Toilet Facilities, Including Downstairs Toilet, En-Suite Shower & Main Family Bathroom
- Walking Distance To Kings Copse Primary School
- Enclosed Garden With Rear Gated Access
- Easy Access To Motorway Links & Hedge End Train Station
- Walking Distance To Rodaway Park & Manor Farm Country Park



Nestled in the heart of Hindmarch Crescent, this charming two-bedroom terraced home, built in 2013, offers the perfect opportunity for first-time buyers to set down roots. Designed with modern living in mind, this property features an impressive three toilet facilities, including a downstairs WC, en-suite shower room, and a contemporary three-piece bathroom suite.