




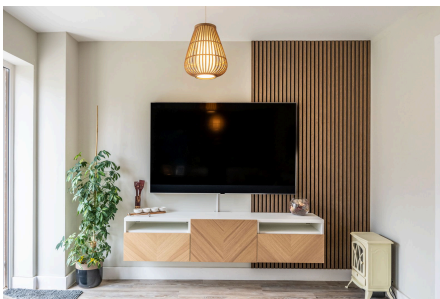


MARCO HARRIS  
THE PROPERTY PROFESSIONALS

## Beedon Way, Eastleigh, SO50

£0

 3  3  1



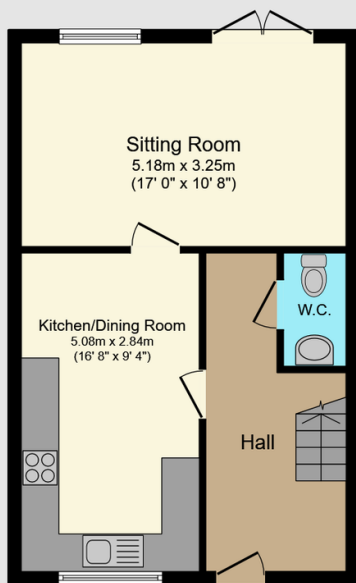
### Welcome to Beedon Way!

Marco Harris are delighted to offer this stunning three bedroom family home, tucked away in North Stoneham Park on the highly regarded Highwood Homes development. Fast becoming one of the most requested locations to live across the South Coast, Eastleigh is extremely central and has an abundance of local amenities on your doorstep. This property perfectly blends comfort and modern living, offering an ideal space for both relaxation and entertainment.



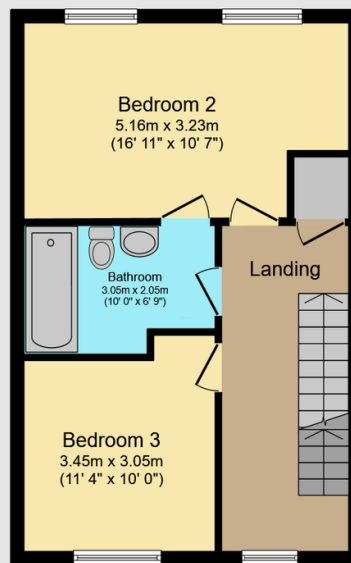
## Key Features

- Beautifully Presented Townhouse
- Situated In A Popular New Development
- Separate Dining And Lounge Area
- Ultra Modern Kitchen With Integrated Whitegoods
- Three Generous Sized Bedrooms and Bathrooms
- Pets Considered
- Two Allocated Parking Spaces
- Low Maintenance Rear Garden
- Offered Unfurnished & Flexible Availability
- Contact Marco Harris across our social media platforms, website or WhatsApp numbers. Follow us for exclusive updates to help find your dream home! 🏠



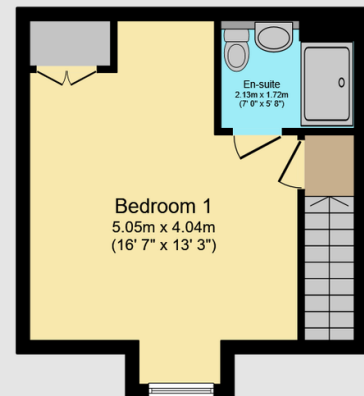
Ground Floor

Floor area 43.7 m<sup>2</sup> (470 sq.ft.)



First Floor

Floor area 43.7 m<sup>2</sup> (470 sq.ft.)



Second Floor

Floor area 27.3 m<sup>2</sup> (294 sq.ft.)

TOTAL: 114.7 m<sup>2</sup> (1,234 sq.ft.)

This floor plan is for illustrative purposes only. It is not drawn to scale. Any measurements, floor areas (including any total floor area), openings and orientations are approximate. No details are guaranteed, they cannot be relied upon for any purpose and do not form any part of any agreement. No liability is taken for any error, omission or misstatement. A party must rely upon its own inspection(s). Powered by [www.Propertybox.io](http://www.Propertybox.io)