



MARCO HARRIS  
THE PROPERTY PROFESSIONALS

## Lower New Road, West End, Southampton, SO30

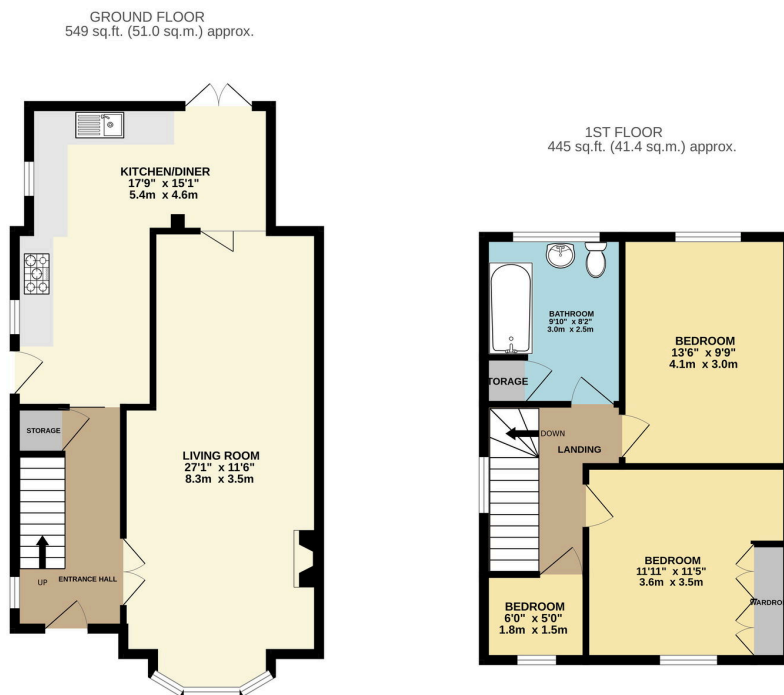
Guide Price £385,000

3 1 1





- Extended Semi-Detached Family Home
- Open Plan L Shape Kitchen/Dining Room With Ample Worktop Space
- Spacious Three Piece Bathroom Suite
- Westerly Facing Rear Garden With Side Gated Access
- Close Proximity To Multiple Schools
- Sizeable Sitting Room Measuring 27ft In Length
- Array Of Period Features
- Driveway Parking For Two Vehicles
- Walking Distance To West End Village
- Gas Central Heating & Double Glazed Windows



TOTAL FLOOR AREA - 995 sq.ft. (92.4 sq.m.) approx.  
Whilst every attempt has been made to ensure the accuracy of the floorplan contained here, measurements of doors, windows, rooms and any other items are approximate and no responsibility is taken for any error, omission or mis-statement. This plan is for illustrative purposes only and should be used as such by any prospective purchaser. The services, systems and appliances shown have not been tested and no guarantee as to their operability or efficiency can be given.  
Made with Metropix 1/2024

Nestled within a short stroll to West End Village, this charming period family home built in 1929 which offers a delightful blend of character and modern convenience. From the moment you step inside, the warmth and charm of this property are evident, with its original features such as a cozy fireplace, high ceilings, and elegant bay windows.