



MARCO HARRIS
THE PROPERTY PROFESSIONALS

Station Road, Netley Abbey, Southampton, SO31

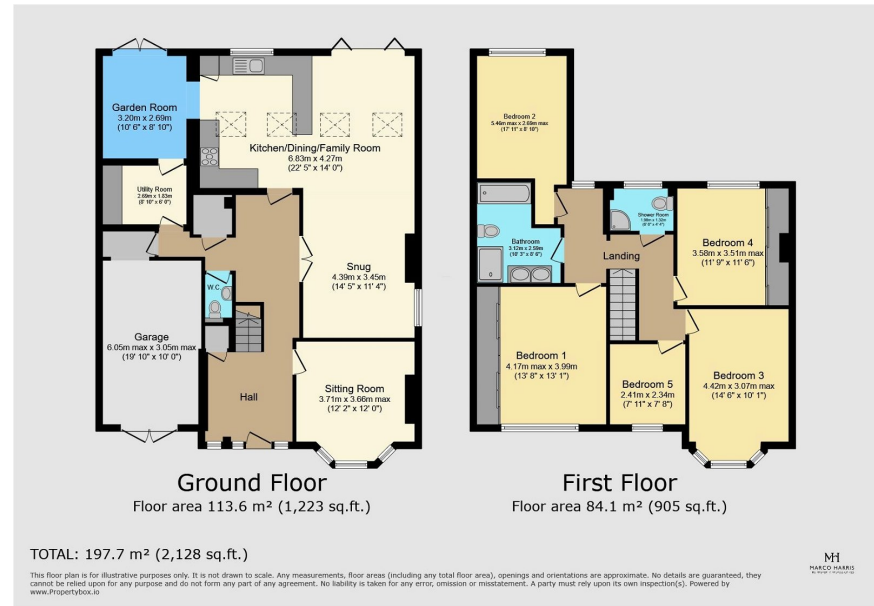
Guide Price £900,000

5 2 5



- EPC Rated C
- Substantial Garage and Ample Parking
- Luxurious Four Piece Bathroom
- Versatile Living Spaces
- Quarter-Acre Plot
- Secure Gated Entrance
- Beautifully Landscaped Gardens
- Five Spacious Bedrooms
- Expansive Open-Plan Kitchen/Dining/Family Room
- Extended and Enhanced Edwardian Design





Originally constructed in the early 1900's and set on a quarter-acre plot, this exquisite Edwardian home blends charm and modern comfort, perfect for families or those seeking a spacious retreat. The gated entrance leads to a resin driveway and substantial garage, surrounded by lush gardens. The front garden features various shrubs, while the expansive rear garden boasts a deck area, circular lawns, a summer house, and new storage sheds. Inside, the original hall leads to a cosy sitting room with a bay window and fireplace, a versatile second reception room, and an expansive open-plan kitchen/dining/family room with vaulted ceilings, skylights, and a bespoke kitchen.

