



MARCO HARRIS
THE PROPERTY PROFESSIONALS

Chalice Court, Hedge End, Southampton, SO30

Guide Price £600,000

6 2 3



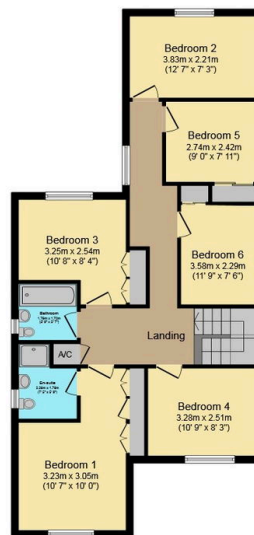


- Exceptional Detached Family Home
- Nestled In The Corner Of A Quiet Cul-De-Sac
- Three Reception Rooms Which Includes A Large Open Plan Kitchen/ Dining Room
- Chalice Court Is Situated Only A Short Walk Away From Hedge End Village
- The Additional Bedrooms Have The Potential To Be Converted Into Larger Rooms
- Six Well Proportioned Bedrooms With En Suite In Main
- Driveway Providing Off Road Parking Plus A Double Garage
- A Home Office, Utility Room And WC Add To This Exceptional Home
- The M27 And Hedge End Retail Park Are Within A Short Drive



Ground Floor

Floor area 85.7 sq.m. (922 sq.ft.) approx



First Floor

Floor area 83.4 sq.m. (898 sq.ft.) approx

Total floor area 169.1 sq.m. (1,820 sq.ft.) approx

This Floor Plan is for illustration purposes only and may not be representative of the property. The position and size of doors, windows and other features are approximate. Unauthorized reproduction prohibited. © PropertyBOX



MARCO HARRIS
THE PROPERTY PROFESSIONALS

Welcome To Chalice Court!

Grounds & Exterior:

Nestled within the quiet embrace of a cul-de-sac, this enchanting and generously expanded six-bedroom detached family abode offers a secluded haven. An inviting blend of elegance and modernity, the exterior is a symphony of architectural finesse. The approach to the residence unveils a gracefully designed driveway, providing convenient off-road parking, leading the way to a detached double garage. The south-easterly facing rear garden, where a laid paved patio invites al fresco gatherings, and verdant lawns are enveloped by thoughtfully planted borders. The perfect backdrop for creating cherished memories and enjoying the outdoors.